



Product Catalogue

ulster™
www.ulstercarpets.com

I would like to take this opportunity to welcome you to our Retailer Reference Guide. This guide has been compiled to offer you an insight into Ulster, our core values, and our long-term commitment to our retailers and to the industry.

We have made significant investments in new ranges and refreshed some of our existing ranges and this guide showcases the entire Ulster offering accompanied by stunning room set and close up photography.

I know that at Ulster we are extremely fortunate to have such good relationships with our retailers and, indeed we can count many of you as our friends. I thank you for your continued support over the years, and assure you that we are clearly focused on strengthening those valued relationships going forward.

Nick Coburn
Group Managing Director



Natural Choice Axminster - Garland Natural (11/20042)
Find this carpet on Page 22



Contents

This Retailer Reference Guide provides you with all of the information you will need on current Ulster Carpets products. We have divided the guide into easily identifiable colour-coded sections which will help you to quickly locate the ideal Ulster product. The colour-coded bars below outline the colours and page numbers of each section.

Section/Content	Page(s)	Section/Content	Page(s)
Behind the Brand	4 - 5	Open Ground	46 - 54
Ulster History & Key Selling Points	4 - 5	Sheriden	46 - 48
Contemporary Traditionals	6 - 21	Athenia	49 - 51
Country House Kazan	6 - 7	Tazmin	52 - 54
Country House Beaumont	8 - 9	Classic Traditionals	55 - 60
Anatolia	10 - 12	Glenavy	55 - 57
Ariana	13	Glenmoy	58 - 59
Blossom	14 - 15	Glendun	60
Boho Collection	16 - 20	Glenshane	60
Braeburn	21	the Mix	61 - 64
Tonals	22 - 25	<i>the</i> mix	61 - 64
Natural Choice Axminster	22 - 23	Runners	65 - 69
Natural Choice Co-ordination	24	Anatolia Runners	65
Elements Organza	25	Athenia Runners	66
Plains	26 - 37	Country House Runners	66
Ulster Velvet	26 - 30	Glenavy Runners	67
Grange Wilton	31 - 32	Sheriden Runners	68
York Wilton	33 - 36	Tazmin Runners	69
Natural Choice Plains	37	Colour Co-ordination	70 - 78
Heritage Twist	38 - 39	Technical Information	79 - 83
Natural Textures	40 - 45	Additional Information	84 - 85
Open Spaces Panama	40		
Open Spaces Monaco	41		
Open Spaces Capri	41		
Open Spaces Borneo	42		
Open Spaces Dubai	42		
Open Spaces (Laneve) Queenstown	43		
Open Spaces (Laneve) Auckland	44		
Open Spaces (Laneve) Wellington Stripe	45		

Behind the Brand

The History

Ulster Carpets was founded by George Walter Wilson (pictured) in Northern Ireland in 1938 and is still privately owned by the founder's family. Ulster has taken the positive attributes associated with being a Family-owned establishment and combined them with a Forward-thinking, global approach to business. The result is a technologically advanced, service-driven company with flair, flexibility and a passion for quality.

Manufacturing in the UK & Ireland Since 1938

All of our woven carpets are manufactured in Northern Ireland, in one of the most technically advanced carpet weaving plants in the world. In recognition of the PSYLO™ weaving technology we developed, we received the prestigious 'Queens Award for Enterprise'.

Ulster & the Environment

We take our commitment to minimising our impact on the environment very seriously, and were one of the earliest textile companies in the UK to achieve environmental management certificate ISO14001 back in March 2000.

In 2008 we were the first textile manufacturer in the UK & Ireland to achieve the 'Carbon Trust Standard' for significant reductions in our carbon emissions. Since then we have taken this a step further and 100% of our post production waste is now reused or recycled. Our aim is for our manufacturing to be carbon neutral by 2020.

Quality Assurance

All of our yarn is manufactured in our own spinning plant in Dewsbury, North Yorkshire, enabling us to have total control over the quality of yarn and long-term security of supply.

Our woven carpets are quadruple-sheared and inspected three times, and all of our stock ranges have been upgraded in the last five years to a heavier weight 2 ply yarn. This improved yarn will enhance the durability of the carpet and its lifespan.

Efficient Service

Our location within the UK and Ireland means we are well placed to offer a timely and efficient service. More than 95% of our product can be serviced immediately from extensive stockholdings. Once received, over 90% of orders are delivered within 5 working days to anywhere in the UK and Ireland.

Our local, award-winning Customer Services Team (pictured) are on hand to process orders and assist you quickly with any Ulster-related enquiries.

Cost-Effective, Colour-Matching Multi-Widths

All our ranges are offered in colour-matching multi-widths, minimising waste and enabling the most cost-effective installation of our carpet to any floor space. Our woven axminster products (with the exception of Elements) are available in 4.57m, 3.66m, 2.74m, 1.83m and 0.91m widths, while all woven wilton and tufted products are available in 5m, 4m, 3m, 2m and 1m widths.

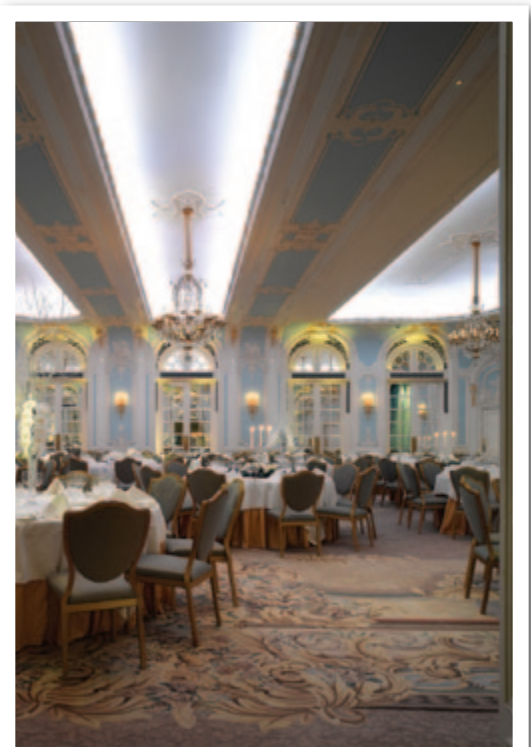
All widths will colour match if requested when the order is placed.

Contract Focus

In addition to our extensive stock offering, Ulster is a global market leader with unparalleled experience in the planning, design and manufacture of bespoke woven axminster carpet for the contract market.

Our unique PSYLO™ weaving technology and the resulting capabilities sets Ulster apart and enables us to work with contract clients around the world in providing first class products and service at every stage.

Ulster has supplied prestigious hotels including The Savoy, London (pictured) - Four Seasons George V, Paris - The Ritz Carlton, Toronto and the King Abdullah Convention Center in Saudi Arabia.



Country House Collection Kazan

80% Wool / 20% Nylon
Woven Axminster

Available in 4.57m, 3.66m,
2.74m, 1.83m & 0.91m
Runner 0.91m wide

Suitable for Extra Heavy Wear



Kazan - Tench Green (91/20018) & Runner (91/20019)

Contemporary Traditionals

Kazan, an opulent antique Persian woven axminster design with co-ordinating runner, is now available in eight sophisticated colourways, from the classical to the more contemporary.

Woven in a soft yet hardwearing 80% wool 20% nylon yarn blend, this axminster range is the ideal choice for consumers who want to create instant grandeur in the home.

For the full collection of Ulster runners please see pages 65-69.



13/20018 Antique White



13/20018 Antique White



92/20018 Viceroy Grey



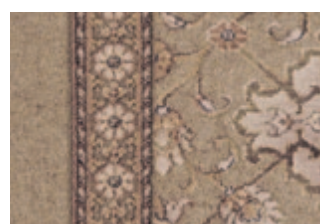
51/20018 Sepia



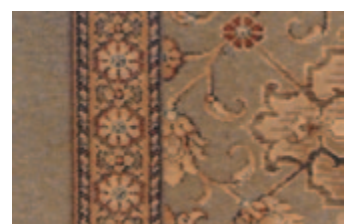
13/20019 Antique White Runner



13/20019 Antique



92/20019 Viceroy Grey Runner



51/20019 Sepia Runner

Country House Collection Kazan



Kazan - Tench Green (91/20018) & Runner (91/20019)

Contemporary Traditionals

‘...an opulent antique Persian woven axminster...’



41/20018 Persian Gold



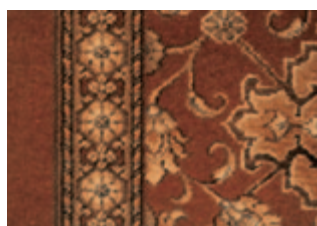
21/20018 Indian Red



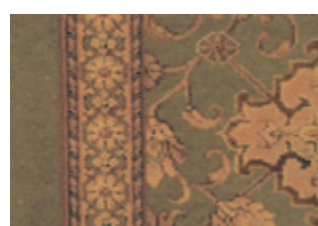
91/20018 Tench Green



41/20019 Persian Gold Runner



21/20019 Indian Red Runner



91/20019 Tench Green Runner

Country House Collection Beaumont

80% Wool / 20% Nylon
Woven Axminster

Available in 4.57m, 3.66m,
2.74m, 1.83m & 0.91m

Suitable for Extra Heavy Wear



Beaumont - Brindle (12/20016)

Contemporary Traditionals

Conjuring up memories of picnic blankets, kilts and all things woollen and warm, Beaumont is a versatile, stylish and sophisticated plaid range by Ulster.

This traditional design has been brought into the 21st Century: subtle tones and carefully-placed highlights of colour create a carpet with depth and timeless appeal, in eight beautiful colourways.

The Beaumont range captures the essence of the timeless Country House Collection.



11/20016 Chalk Downs



91/20016 Turtle Dove



12/20016 Brindle



14/20016 Osprey



15/20016 Grouse



48/20016 Croft Gold



47/20016 Antique Green



51/20016 Balmoral Red

Country House Collection Beaumont



Contemporary Traditional

Beaumont - Turtle Dove (91/20016)

Anatolia

80% Wool / 20% Nylon
Woven Axminster

Available in 4.57m, 3.66m,
2.74m, 1.83m & 0.91m
Runner 0.69m

Suitable for Extra Heavy Wear

Contemporary Traditionals

Anatolia is a quality woven axminster range that delivers style and elegance. A flowing stair runner, a subtle scroll or an opulent medallion design can provide the inspiration for any living space.

Anatolia offers versatility and has the ability to look timelessly elegant in one setting and expressively modern in another.

Available in eleven different colourways and four designs, Anatolia can create an aspirational yet attainable look.

Anatolia Medallion - Note to Retailers

For those consumers who wish to use the medallion design on their staircase, please advise that the medallion element is not centralised within the overall design. To counteract this, please recommend the following:

- Use the runner design, as the medallion is centrally positioned
- The versatility and even distribution of the scroll design sits perfectly on a staircase

Alternatively, if neither of these options are applicable, a 1.83m wide cut will be needed from which the required width will cut to ensure the medallion is centered. Ulster Carpets is not responsible for the subsequent extra cost.



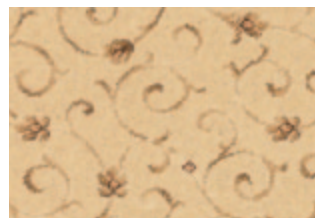
Medallion Pampas (51/2287)



42/2287 Medallion Lotus



41/2287 Medallion Dune



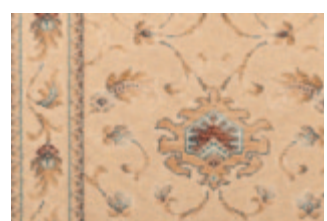
42/2288 Scroll Lotus



41/2288 Scroll Dune



42/2289 Runner Lotus



41/2289 Runner Dune

Anatolia



Scroll Lotus (42/2288)



51/2287 Medallion Pampas



44/2287 Medallion Nile Gold



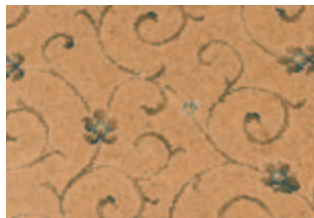
43/2287 Medallion Tunis



11/2287 Medallion Delta



51/2288 Scroll Pampas



44/2288 Scroll Nile Gold



43/2288 Scroll Tunis



11/2288 Scroll Delta



51/2289 Runner Pampas



44/2289 Runner Nile Gold



43/2289 Runner Tunis



11/2289 Runner Delta

Anatolia

80% Wool / 20% Nylon
Woven Axminster

Contemporary Traditionals



Medallion Fez (81/2293) & Runner Fez (81/2299)



72/2287 Medallion Isis



52/2287 Medallion Luxor



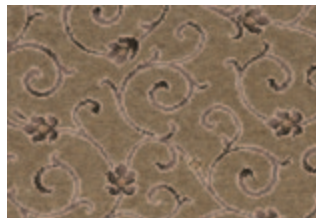
81/2293 Medallion Fez



21/2374 Shirvan Petra Red



72/2288 Scroll Isis



52/2288 Scroll Luxor



81/2298 Scroll Fez



71/2623 Shirvan Oasis



72/2289 Runner Isis



52/2289 Runner Luxor



81/2299 Runner Fez

Ariana

80% Wool / 20% Nylon
Woven Axminster

Available in 4.57m, 3.66m,
2.74m, 1.83m & 0.91m

Suitable for Heavy Wear

Ariana is a simple, floral design - an eye-catching feature in any living space.

Utilising a subtle array of earthy tones - from warm neutrals to golds and red - Ariana helps to create inviting, elegant appeal.

This 80% wool, 20% nylon woven axminster range accomplishes visual depth in the design by careful use of colour.



Stucco Beige (11/2712)

Contemporary Traditionals

‘...a simple, floral design...utilising an array of earthy tones...’



Medici Gold (44/2712)



41/2712 Carrera Marble



12/2712 Antique Stone



42/2712 Tuscan Plaster



44/2712 Medici Gold

Blossom

80% Wool / 20% Nylon
Woven Axminster

Available in 4.57m, 3.66m,
2.74m, 1.83m & 0.91m

Suitable for Heavy Wear

Contemporary Traditionals

Blossom is a delicate floral woven axminster range inspired by the orient. This range utilises a warm selection of plain and heather yarns. Gently balancing open ground and pattern, Blossom accomplishes subtle impact through the modest use of accent colours.

Covering a spectrum of colour, this range offers neutrals which have current accent colours, modern and contemporary colour combinations as well as traditional tones that reflect the oriental reference.



Incense (54/20053)

‘...a delicate floral woven axminster range inspired by the orient...’



11/20053 Camellia



41/20053 Sungold



52/20053 Bronze



54/20053 Incense



91/20053 Fig



21/20053 Laquer

Blossom



Contemporary Traditionals

Incense (54/20053)

Boho Collection

80% Wool / 20% Nylon

Available in 4m, 3m, 2m & 1m

Suitable for Heavy Wear

Contemporary Traditionals

Boho Collection is the epitome of style. The six vintage inspired designs are an ode to all things retro, reworked to create contemporary, practical axminster for the 21st century home. Each design offers their own quirky personality, brought together by the soft pastel shades of the “heritage” colour palette to create a unique and stunning collection.

Made from a hardwearing 80% wool / 20% nylon mix, Boho Collection has been manufactured to last as long as the iconic designs which inspired it.

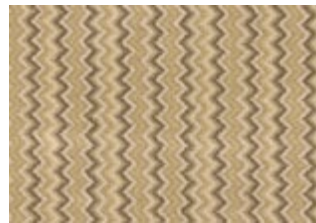


Tribe Tea Rose (01/30001)



Tribe Tea Rose

Tribe



71/30001 Apple Blossom



31/30001 Summer Breeze



01/30001 Tea Rose

Boho Collection



Contemporary Traditionals
Bloomsbury Summer Breeze (31/30003)

Bloomsbury



31/30003 Summer Breeze



01/30003 Tea Rose

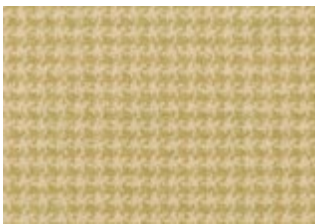


41/30003 Sunlight

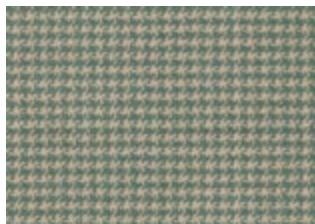


Boho Collection

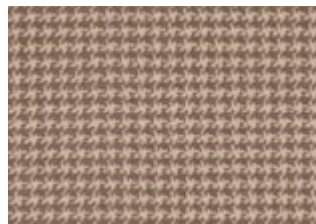
Chic



71/30002 Apple Blossom



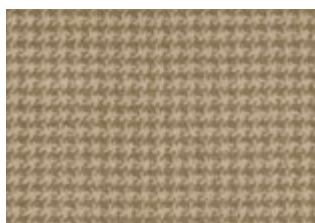
31/30002 Summer Breeze



71/30002 Apple Blossom



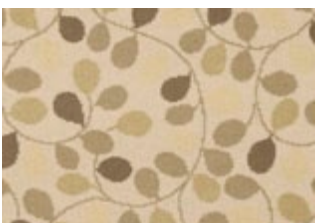
91/30002 Moon Shimmer



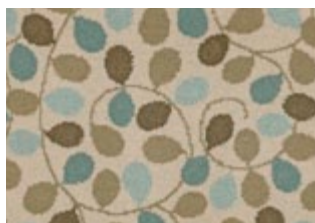
11/3002 Honesty

Contemporary Traditionals

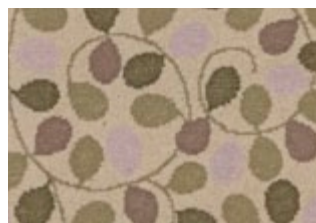
Rhapsody



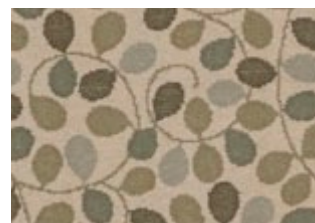
31/30005 Apple Blossom



31/30005 Summer Breeze



71/30005 Tea Rose



91/30005 Moon Shimmer

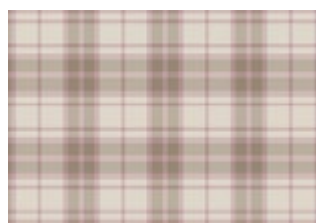
Hamilton



71/30006 Apple Blossom



31/30006 Summer Breeze



71/30006 Tea Rose



91/30006 Moon Shimmer



11/30006 Honesty

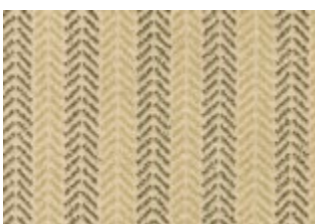
Boho Collection

Hemingway



Apple Blossom (71/30004)

‘ Woven from 100% undyed wool... in seven ‘organic’ colourways.’



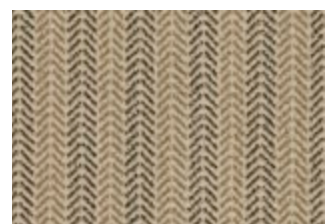
71/30004 Apple Blossom



31/30004 Summer Breeze



91/30004 Moon Shimmer



11/30004 Honesty



Apple Blossom (71/30004)

Braeburn

80% Wool / 20% Nylon
Woven Axminster

Available in 4.57m, 3.66m,
2.74m, 1.83m & 0.91m

Suitable for Heavy Wear



Contemporary Traditionals

Plaids are a timeless design which never seem to go out of style. Braeburn gives the traditional design a contemporary refresh by using stunning colourways of petrol blue, plum, gorse greens and cool greys to create a beautiful and unique floor covering. The five colourways are reminiscent of rugged landscapes, deep forests and wild hedgerows.

Woven with a 80% wool / 20% nylon mix, Braeburn is design to stand the test of time within the home. The classic designs complement both contemporary and traditional interior schemes, instantly adding charater and warmth.

‘...the five colourways are reminiscent of rugged landscapes, deep forests and wild hedgerows.’



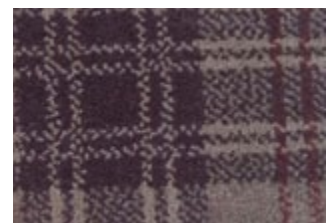
92/20084 Sea Holly



91/20084 Estuary



72/20084 Myrtle



01/200084 Tayberry



71/20084 Petrel

Natural Choice Axminster

100% undyed wool
Woven Axminster

Available in 4.57m, 3.66m,
2.74m, 1.83m & 0.91m

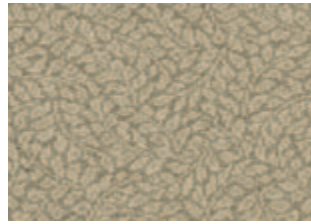
Suitable for Extra Heavy Wear

Recognising a growing public awareness of ecological and environmental issues, Ulster has developed Natural Choice, an eco collection woven from 100% undyed wool.

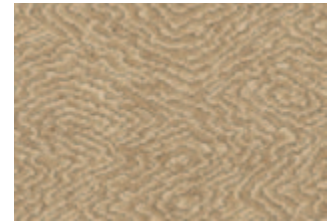
Natural Choice Axminster is made up of a variety of textural designs, each inspired by nature.

Composed from natural, renewable elements, Natural Choice is completely recyclable and biodegradable at the end of its life cycle. It therefore has a minimal effect on the environment.

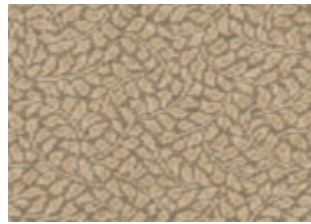
Tonals



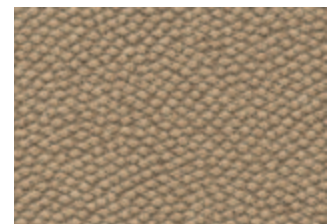
51/20043 Rowan Dove



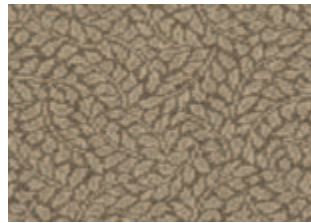
41/20047 Cove Fawn



41/20043 Rowan Fawn



41/20046 Shale Fawn



91/20043 Rowan Slate



41/20045 Fresco Fawn



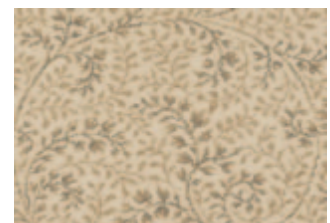
51/20048 Chenille Dove



91/20045 Fresco Slate



41/20048 Chenille Fawn



11/20042 Garland Natural



91/20048 Chenille Slate



11/20041 Tapestry Natural



Shale Dove (51/20046)

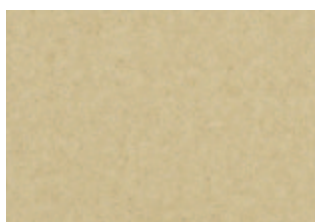
Natural Choice Co-ordination

Natural Choice Axminster and Plains ranges, as a co-ordinating collection, can effortlessly work together in a variety of combinations. When used side by side Natural Choice woven axminster and woven wilton colourways can create a relationship between various internal spaces whilst subtly defining each area. Below are just a few co-ordination options. For a full list of co-ordinating options see pages 70-78.

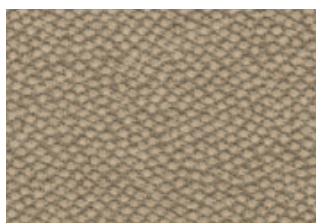


41/20048 Chenille Fawn

+



N5004 Eider



51/40046 Shale Dove

+



N5007 Platinum



11/20041 Tapestry Natural

+



N5003 Cobble



11/20042 Garland Natural

+



Top - Bottom: Eider (N5004), Rowan Fawn (41/20043), Plover (N5002), Cove Fawn (41/20047)

Natural Choice Axminster

Tonals



Tapestry Natural (11/20041)

Elements Organza

80% Wool / 20% Nylon
Woven Axminster

Available in 4m, 3m, 2m & 1m

Suitable for Extra Heavy Wear

A contemporary axminster range, the softly patterned design of Elements Organza bridges the gap between heavily patterned and plain carpet.

Elements Organza offers an extensive palette - from classic neutrals through to 'statement' colours.

Available in colour-matching multi-widths, Elements Organza co-ordinates with various Ulster plains which, when presented together, create a polished, refined elegance in an interior space.



20/2720 Amaretto



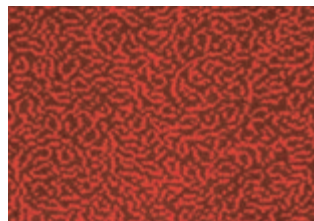
18/2720 Vellum



19/2720 Sandalwood



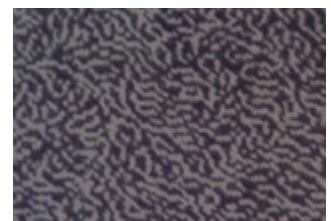
15/2720 Chateau



21/2720 Cardinal



92/2720 Smokewood



96/2720 Raven

Tonals



Chateau (15/2720)

'...the softly patterned design bridges the gap between patterned and plain carpet...'

Ulster Velvet

Plains



Ulster Velvet, Mullion (W2614)

Ulster Velvet

80% Wool / 20% Nylon
Woven Wilton

Available in 5m, 4m, 3m, 2m & 1m

Suitable for Extra Heavy Wear

One of the finest wilton products on the market, Ulster Velvet is a luxurious wool-rich flooring. This range looks and feels as its name suggests: smooth, with a texture akin to velvet.

In response to the consumer demand for plain carpets, particularly neutral colourways, the Ulster Velvet range will harmonise and co-ordinate with almost any interior colour scheme.



Fauna (W2607)



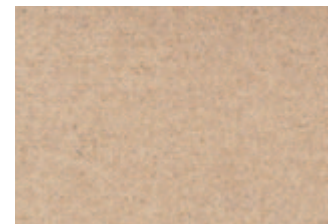
W2016 Linen



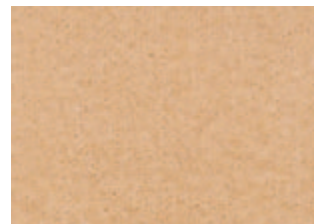
W2014 Putty



W2015 Suede



W2605 Jersey



W9701 Arabesque



W2023 Straw



W837 Champagne



W2607 Fauna



W9702 Pyramid



W838 Camel



W8618 Honey Gold



W2009 Nutmeg

Ulster Velvet

80% Wool / 20% Nylon
Woven Wilton



W2013 Oatmeal



W9209 Canvas



W2022 Pebble



W2603 Mocha



Fauna (W2607)

Plains

Ulster Velvet

80% Wool / 20% Nylon
Woven Wilton



W2616 Cloister



W8625 Aspen Green



W2012 Mouse



W2613 Dovecote



W835 Jade



W2008 Mink



W2614 Mullion



W8623 Quartz



W2018 Aubergine



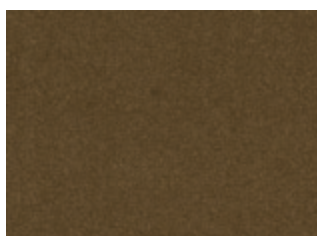
W2615 Mead



W2003 Fir



W9718 Charcoal



W2617 Mushroom



W834 Moss Green

Plains

Ulster Velvet comes in five colour-matching widths to help reduce unnecessary waste. Ulster's unique 5m wide wilton option also reduces the number of seams, ensuring a finished floor covering of unrivalled quality.

Ulster Velvet



W8622 Cyclamen



W2601 Duck Egg



W8830 Imperial Red



W8313 Windsor Blue



W9711 Burgundy



W9203 Royal Blue

80% Wool / 20% Nylon
Woven Wilton

Available in 5m, 4m, 3m, 2m & 1m

Suitable for Extra Heavy Wear

Plains



Imperial Red (W8830)

Grange Wilton

80% Wool / 20% Nylon
Woven Wilton

Available in 5m, 4m, 3m, 2m & 1m

Suitable for Extra Heavy Wear

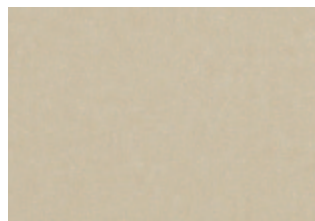
Combining the luxury of wool and the hardwearing properties of nylon, Grange Wilton uses high-twist plain and heather yarns, woven tightly to create the ultimate luxurious dense floorcovering.

The 24 colourways within Grange Wilton include warm organic mineral tones, soft muted greys, beiges, green and reds, all inspired by a timeless 'heritage' palette.

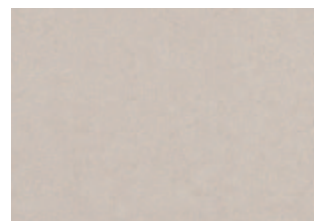
The nostalgic tones and colours found in Grange Wilton will effortlessly help create warmth and deliver practical luxury.



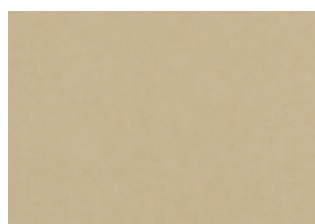
Angora (G1001)



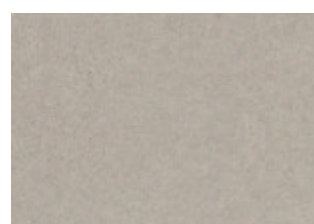
G1009 Beeswax



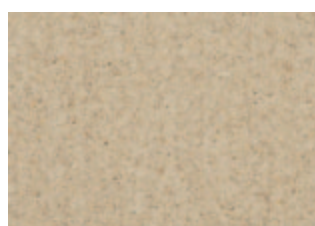
G1018 Whisper



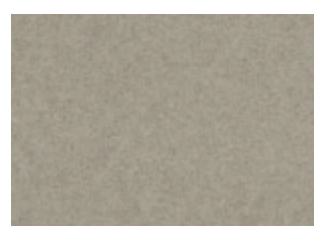
G1011 Pantry



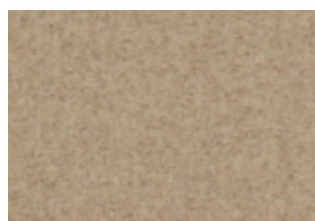
G1021 Mist



G1001 Angora



G1015 Woolsack



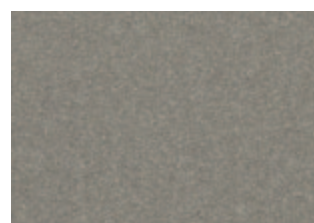
G1007 Spelt



G1022 French Grey



G1002 Wattle



G1019 Greyhound



G1014 Appleby

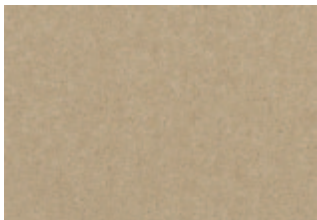


G1016 Lowry

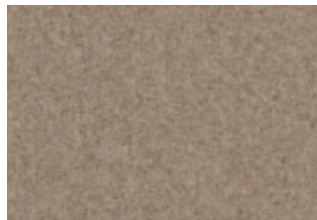
Grange Wilton



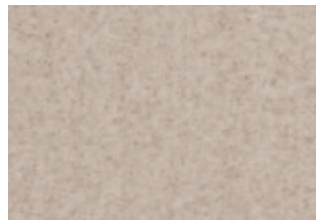
Lowry (G1016)



G1012 Tallow



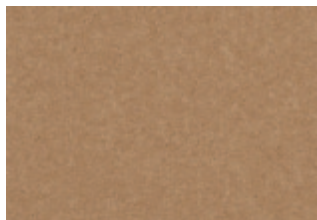
G1005 Partridge



G1004 Flagstone



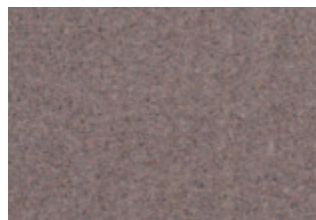
G1024 Kew



G1017 Giltwood



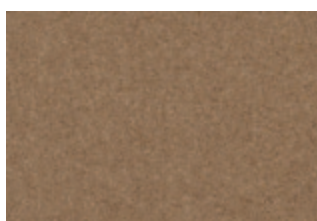
G1013 Romney



G1008 Moorland



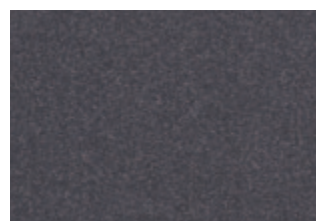
G1010 Grenadier Red



G1003 Coir



G1006 Otter



G1020 Brunel



G1023 Red Setter

York Wilton

80% Wool / 20% Nylon
Woven Wilton

Available in 5m, 4m, 3m, 2m & 1m

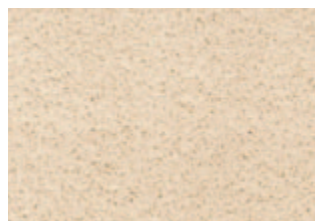
Suitable for Extra Heavy Wear

York Wilton offers a comprehensive palette of 40 colours in an array of plain and heather yarns, with gently-textured twists conveying a simple yet classic style. The heathers add a softer, contemporary feel to the range by blending more than one colour into the twist.

Combining the softness, comfort and warmth of wool with the hard-wearing properties of nylon for optimal performance, York Wilton is suitable for extra heavy wear.



Walnut (Y1029)



Y1021 Flax



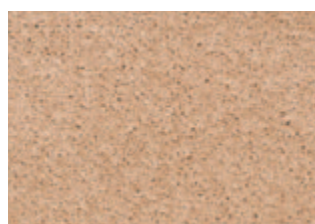
Y1035 Sailcloth



Y1013 Irish Cream



Y1030 Hemp



Y1007 Wholemeal



Y1008 Doeskin



Y1012 Corn



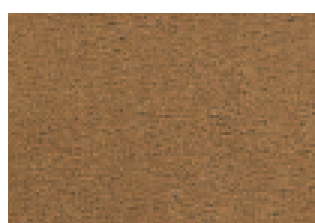
Y1023 Mineral



Y1026 Harvest Gold



Y1032 Flint



Y1037 Safari

York Wilton

Plains



Hazelnut (Y1044)



Y1009 Rice



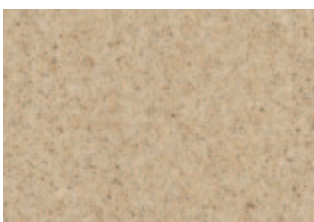
Y1046 Peppercorn



Y1045 Granola



Y1044 Hazelnut



Y1047 Parchment



Y1029 Walnut



Y1005 Biscuit



Y1006 Brown Bear

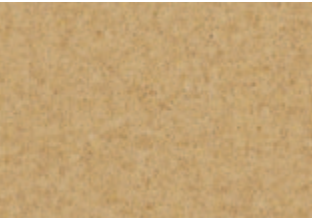
York Wilton

80% Wool / 20% Nylon
Woven Wilton



Matador (Y1042)

Plains



Y1048 Sahara



Y1038 Linseed



Y1011 Gorse



Y1010 Old Gold



Y1015 Iron Ore



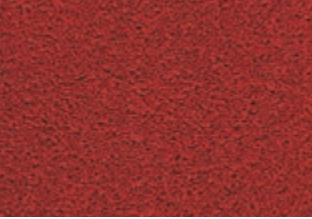
Y1043 Brandysnap



Y1027 Brick



Y1019 Red Earth



Y1042 Matador



Y1014 Redcurrant



Y1041 Shiraz

York Wilton

Plains



Sorrel (Y1040)



Y1001 Meadow



Y1002 Sage



Y1004 Kale



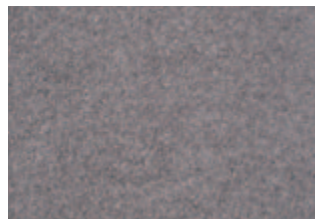
Y1049 Spruce



Y1040 Sorrel



Y1051 Heron



Y1050 Pewter



Y1018 America Blue

‘...a comprehensive palette of 45 colours in a subtle array of plain and heather yarns.’

Natural Choice Plains

100% undyed wool
Woven Wilton

Available in 5m, 4m, 3m, 2m & 1m

Suitable for Extra Heavy Wear

The Natural Choice Plains range has been specifically designed to complement the Natural Choice Axminster range, offering a complete, co-ordinated solution.

Woven from 100% natural undyed wool, each of the Natural Choice Plains delivers all of the associated benefits of wool in seven 'organic' woven wilton colourways.

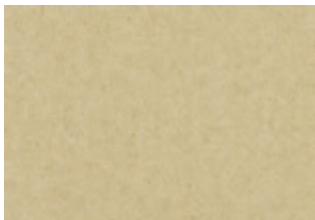
By combining a patterned carpet in one room with the subtlety of a plain carpet in another, the consumer can easily create a naturally flowing effect.



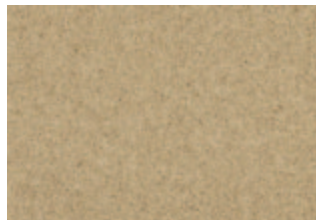
Top - Bottom: Platinum (N5007), Pumice (N5005) & Kindling (N5006)

Plains

‘ Woven from 100% undyed wool... in seven ‘organic’ colourways.’



N5004 Eider



N5001 Alpaca



N5002 Plover



N5003 Cobble



N5007 Platinum



N5005 Pumice

Heritage Twist

80% Wool / 20% Nylon

Available in 5m, 4m, 3m, 2m & 1m

Suitable for Extra Heavy Wear



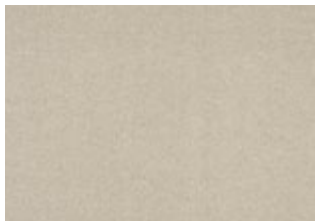
Comprised of 80% Wool, 20% Nylon Heritage Twist is a luxurious floorcovering, designed to stand the test of time.

A beautiful combination of soft heathers and stunning plains, available in stunning pastel and vintage tones which offer a nod to the past.

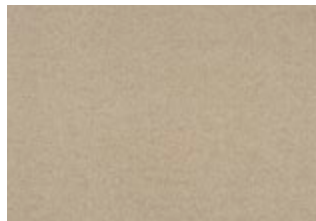
An easy-living mix of soft textures, brought together by a sophisticated colour palette, Heritage Twist will effortlessly add to the ambience of a home without compromising on quality and practicality.

Plains

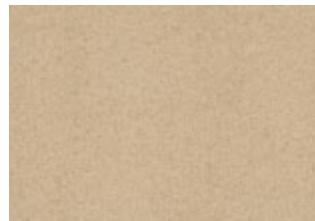
‘...a luxurious floorcovering designed to stand the test of time.’



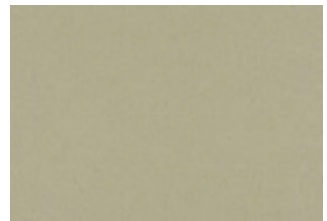
H3310 Snowberry



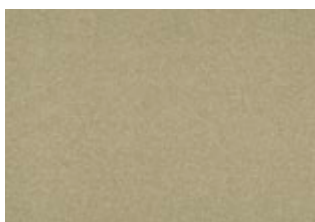
H3316 Balsa



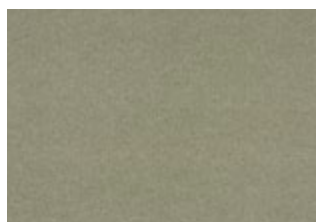
H3302 Shanty



H3301 Pollen



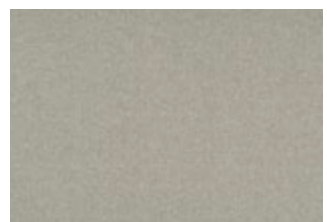
H3306 Mimosa



H3305 Gardenia



H3304 Nettle



H3321 Frost

Heritage Twist



H3323 Cologne



H3311 Chesil



H3319 Macaroon



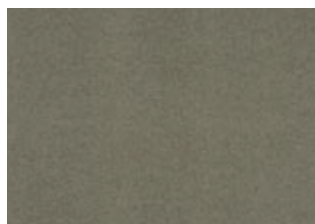
H33013 Almond



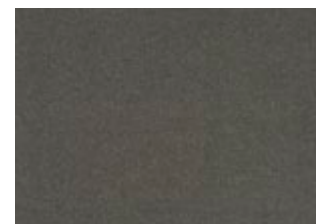
H3317 Teasel



H3318 Toast



H3312 Donkey



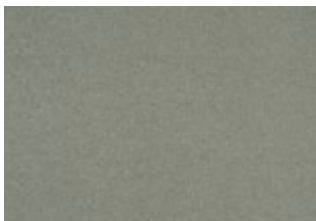
H3320 Hyacinth



H3313 Portland



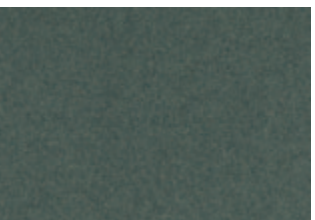
H3309 Skylark



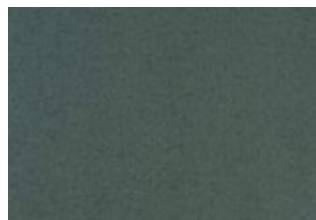
H3322 Seal



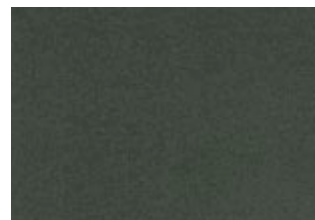
H3307 Tide



H3308 Cascade



H3314 Zinc



H3315 Canyon



H3324 Sentry

plains

‘...24 stunning colourways which offer a nod to the past.’

Open Spaces

100% Wool
Loop Pile

Available in 5m, 4m, 3m, 2m & 1m

Suitable for Heavy Wear

Natural Textures

Open Spaces is a comprehensive collection of loop pile carpets in six different designs: Borneo, Dubai, Morocco, Oman and the Laneve ranges; Auckland and Queenstown. Constructed from 100% wool, the Open Spaces collection delivers a textured contemporary look that is soft, warm and durable.

Open Spaces is offered in an extensive array of organic colours that will merge seamlessly into all interior schemes and co-ordinate with Ulster's extensive woven axminster offering.



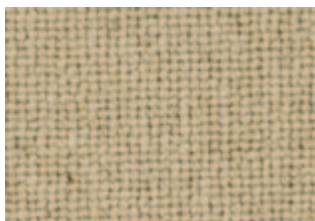
Mono (75/1170)



10/110 Bone



30/1170 Gesso



20/1170 Loft



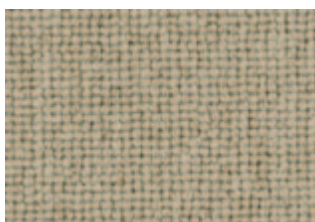
65/1170 Metro



35/1170 Nude



77/1170 Ember



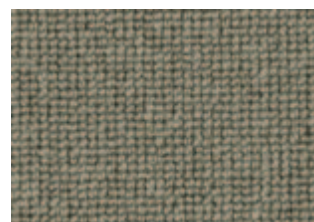
70/1170 Quicksilver



60/1170 Ashen



72/1170 Orbit



75/1170 Mono

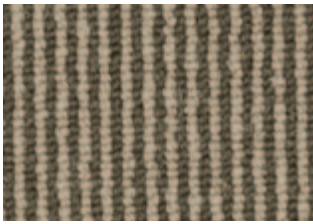
Monaco



65/1170 Filo



73/1175 Graphic



77/1175 Aniseed



72/1175 Gallery



76/1175 Chrome



78/1175 Galaxy



Gallery (72/1175)

Natural Textures

Capri



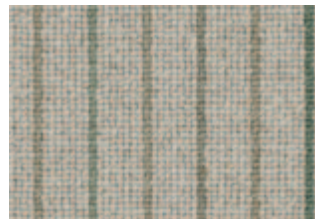
Verdi (20/1173)



10/1173 Bianco



20/1173 Verdi



70/1173 Como



72/1173 Parma

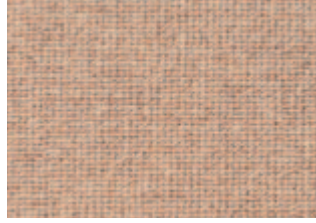


75/1173 Grigio

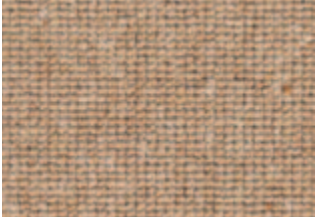
Borneo



30/1153 Muslin



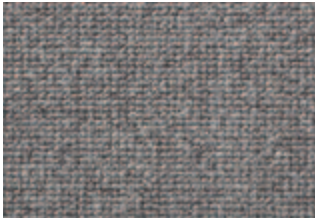
44/1153 Peanut



43/1153 Oatcake



70/1153 Marble



72/1153 Steel



Peanut (44/1153)

Natural Textures

Dubai



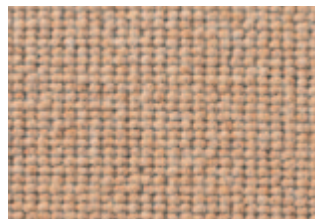
10/1319 Snowdrop



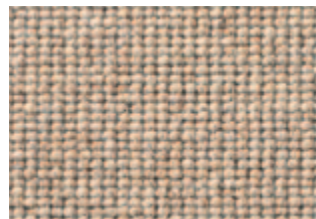
15/1319 Lemongrass



20/1319 Blonde



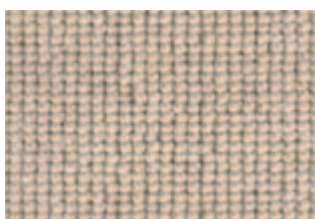
43/1319 Demerara



30/1319 Malt



31/1319 Pearl



61/1319 Limewash



71/1319 Dapple

Please see our colour co-ordination section on pages 70-78.

For a full list of co-ordination options please visit www.ulstercarpets.com/colourcoordination

Open Spaces (Laneve)

What is Open Spaces Laneve?

Ulster Carpets, working in partnership with Wools of New Zealand, have developed two 100% New Zealand wool, tufted (loop pile), Laneve ranges - Open Spaces (Laneve) Auckland and Open Spaces (Laneve) Queenstown.

Open Spaces Auckland, a plain rib range, comprises of six colourways. Accompanying this is the Open Spaces Queenstown range a textured two-tone rib also available in six colourways.

Manufactured in Denmark by danfloor (an Ulster Group Company specialising in the manufacture of tufted products), the Open Spaces Auckland and Open Spaces Queenstown ranges utilise a dense loop pile texture to create a natural contemporary floor covering that is also soft and warm.

For more information please visit www.woolsnz.com



100% New Zealand Wool

Available in 5m, 4m, 3m, 2m & 1m

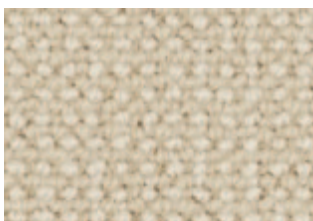
Suitable for Heavy Wear



Natural Textures

Queenstown

Queenstown - Quill (63/1431)



20/1431 Crystal Beige



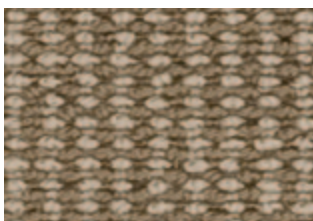
25/1431 Bunting



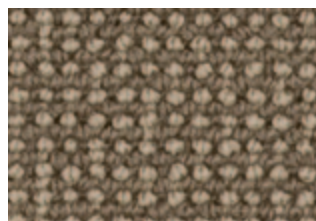
63/1431 Quill



64/1431 Jute



66/1431 Awning



68/1431 Nova



70/1431 Swedish Grey



75/1431 Furnace Black

Open Spaces (Laneve)

100% New Zealand Wool

Available in 5m, 4m, 3m, 2m & 1m

Suitable for Heavy Wear

In choosing any of these Wools of New Zealand Laneve products, the consumer is purchasing a luxurious 100% wool carpet, traceable back to individual farmers (via Wools of New Zealand fully-integrated supply chain) who must meet a comprehensive range of environmental, social responsibility and animal welfare standards.

Upon purchase customers will be eligible to receive a "PROVENANCE PACK" from Wools of New Zealand.

This pack contains a certificate of authenticity and a unique batch reference. Consumers will then be able to enter this reference on the Wools of New Zealand website and trace the wool in their carpet back to the farms where the wool was grown.



Auckland - Grayling (70/1428)

Auckland



10/1428 Calico



62/1428 Hammock



71/1428 Coast



28/1428 Mortar



25/1428 Driftwood



64/1428 Hare



70/1428 Grayling



74/1428 Anvil

Open Spaces (Laneve)



Natural Textures

Wellington Stripe

100% New Zealand Wool

Available in 5m, 4m, 3m, 2m & 1m

Suitable for Heavy Wear

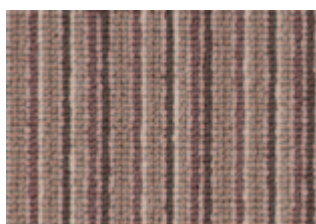
Quay (10/1433)



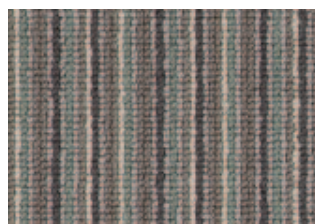
40/1433 Linnet



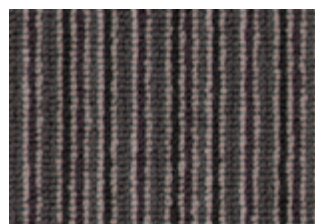
20/1433 Reed



30/1433 Marron



10/1433 Quay



60/1433 Carbon

Sheriden

80% Wool / 20% Nylon
Woven Axminster

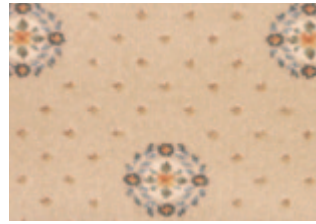
Available in 4.57m, 3.66m,
2.74m, 1.83m & 0.91m
Runner 0.69m

Suitable for Extra Heavy Wear

Sheriden is a classical collection that offers 13 colourways in three co-ordinating cameo, pindot and runner designs.

This range provides consumers with the opportunity to create a simply elegant, stylish and flowing interior when any combination of the three Sheriden designs is chosen.

The extensive colour palette ranges from soft tones to stronger regal colours, for those who want to make the ultimate style statement.



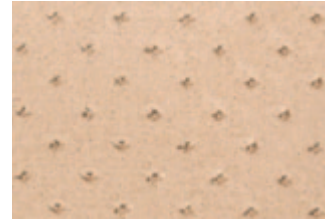
42/2558 Cameo Provencale



21/2461 Cameo Straw



42/2562 Pindot Provencale



21/2462 Pindot Straw



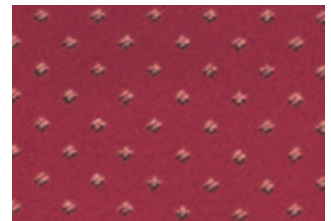
42/2574 Runner Provencale



21/2605 Runner Straw



73/2461 Cameo Claret



73/2462 Pindot Claret

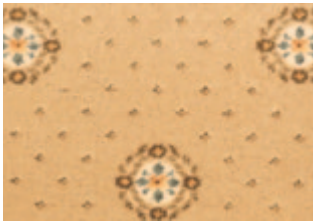


73/2605 Runner Claret



Cameo Provencale (42/2558)

Sheriden



13/2558 Cameo Regency Cream



43/2617 Cameo Florence Gold



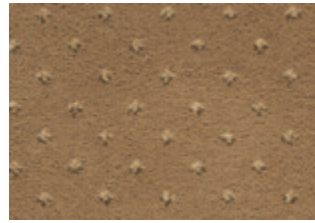
51/2558 Cameo Downton



13/2562 Pindot Regency Cream



43/2562 Pindot Florence Gold



51/2562 Pindot Downton



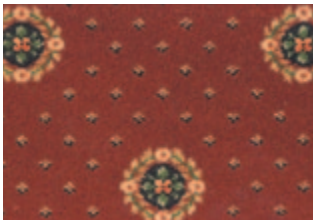
13/2574 Runner Regency Cream



43/2622 Runner Florence Gold



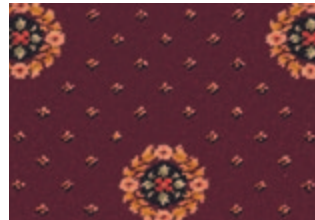
51/2574 Runner Downton



32/2461 Cameo Tuscany



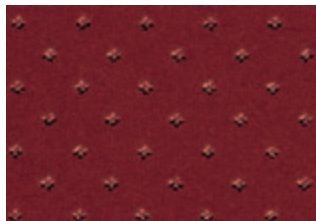
10/2461 Cameo Royal Red



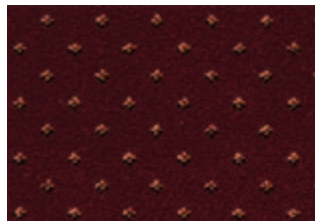
22/2614 Cameo Bordeaux



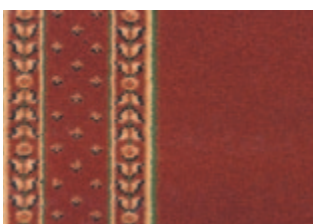
32/2462 Pindot Tuscany



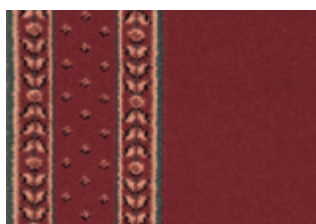
10/2462 Pindot Royal Red



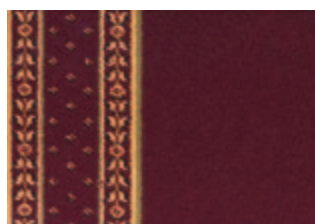
22/2562 Pindot Bordeaux



32/2605 Runner Tuscany



10/2605 Runner Royal Red



22/2576 Runner Bordeaux

Open Ground

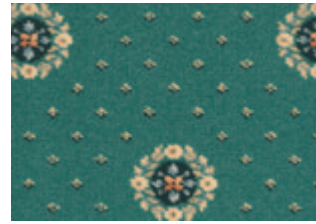
For a full list of runners available from Ulster please see pages 65-69.

Sheriden

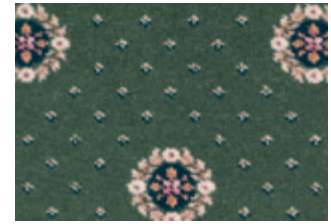
80% Wool / 20% Nylon
Woven Axminster



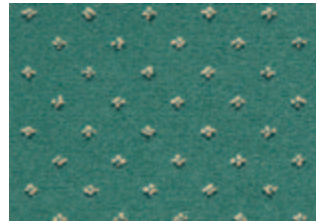
Cameo Provencale (42/2558)



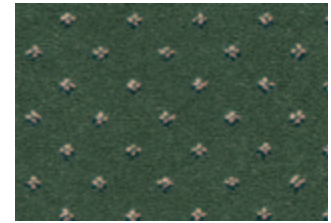
45/2461 Cameo Jade



4/2461 Cameo Sherwood



45/2462 Pindot Jade



4/2462 Pindot Sherwood



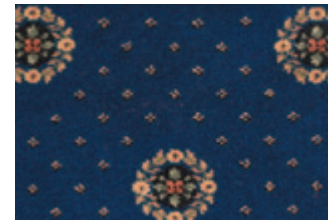
45/2605 Runner Jade



4/2605 Runner Sherwood



91/2558 Cameo Acorn



52/2461 Cameo Royal Blue



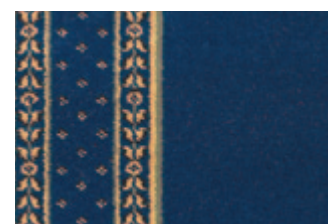
91/2562 Pindot Acorn



52/2462 Pindot Royal Blue



91/2574 Runner Acorn



52/2605 Runner Royal Blue

‘...a classical woven
axminster range that
delivers simple elegance...’

Open Ground

Athenia

80% Wool / 20% Nylon
Woven Axminster

Available in 4.57m, 3.66m,
2.74m, 1.83m & 0.91m wide
Runner 0.69m

Suitable for Heavy Wear

Athenia, a firm consumer favourite, is a dynamic and contemporary product, available in distinctive co-ordinating motif, pindot and runner designs.

Given its innate adaptability and elegance, Athenia can be used to create a wide range of border, runner and rug combinations in the home.

Alternatively, one Athenia design can be effortlessly used to inject a rich infusion of colour and style to any interior space.



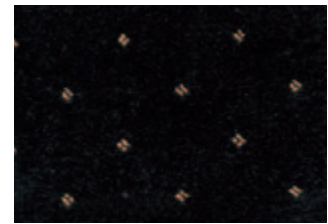
12/2566 Motif Royal Blue



91/2707 Motif Black



12/2572 Pindot Royal Blue



91/2572 Pindot Black



12/2583 Runner Royal Blue



91/2711 Runner Black

Open Ground



Motif Black (91/2707) & Runner Black (91/2711)

Athenia

80% Wool / 20% Nylon
Woven Axminster



51/2566 Motif Khaki



45/2566 Motif Pale Green



4/2566 Motif Green



9/2566 Motif Turquoise



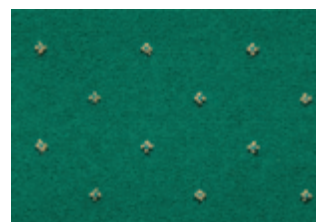
51/2572 Pindot Khaki



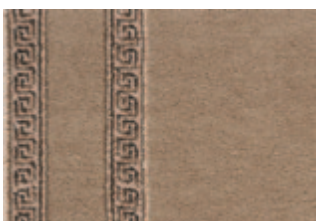
45/2572 Pindot Pale Green



4/2572 Pindot Green



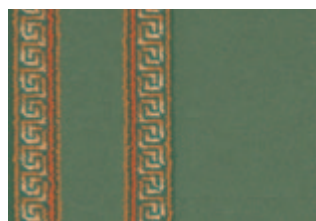
9/2572 Pindot Turquoise



51/20056 Runner Khaki



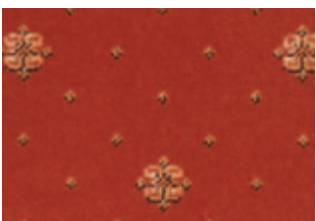
45/2583 Runner Pale Green



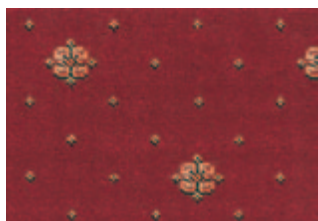
4/2583 Runner Green



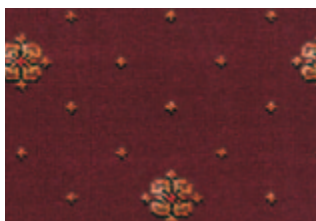
9/2583 Runner Turquoise



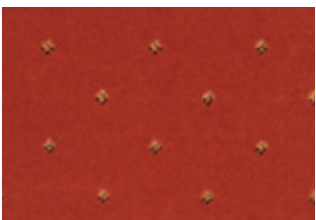
37/2566 Motif Spicy Tomato



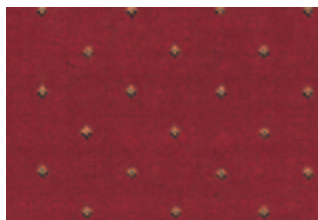
10/2566 Motif Red



22/2566 Motif Wine



37/2572 Pindot Spicy Tomato



10/2572 Pindot Red



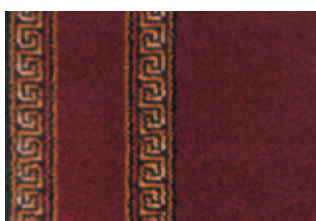
22/2572 Pindot Wine



37/2583 Runner Spicy Tomato



10/2583 Runner Red



22/2583 Runner Wine

Open Ground

Athenia



Open Ground

Motif Black (91/2707)

‘...a classic collection of three co-ordinating designs offered in a sophisticated colour palette...’

Tazmin

80% Wool / 20% Nylon
Woven Axminster

Available in 4.57m, 3.66m,
2.74m, 1.83m & 0.91m wide
Runner 0.69m

Suitable for Heavy Wear

Distinguishable by its simple diamond motif design which is accentuated by a plain or heather background, Tazmin is a stylish and contemporary range.

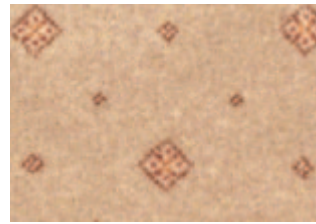
Available in three co-ordinating designs - pindot, runner and motif - Tazmin offers the versatility and choice that consumers have come to expect from Ulster.

One design can be chosen to make a statement, or the motif, pindot and runner options can be used in any combination to achieve a beautiful co-ordinated look.

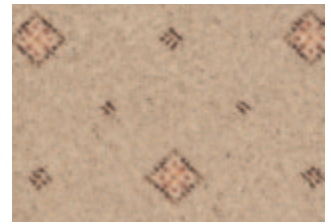
Open Ground



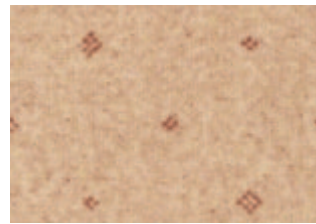
Motif Forest (72/2710)



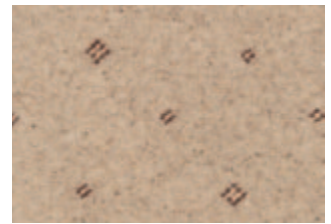
41/2628 Motif Sand



11/2628 Motif Camel



41/2724 Pindot Sand



11/2724 Pindot Camel



41/2634 Runner Sand



11/2634 Runner Camel



43/2628 Motif Honey



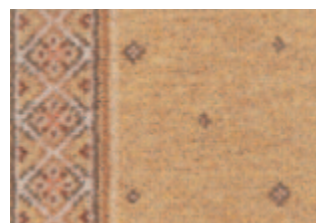
53/2628 Motif Kaftan



43/2724 Pindot Honey



53/2724 Pindot Kaftan



43/2716 Runner Honey



53/2716 Runner Kaftan

Tazmin



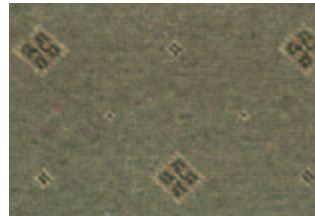
Motif Camel (11/2628)



91/2628 Motif Shadow



52/2628 Motif Umber



72/2710 Motif Forest



47/2628 Motif Green



91/2724 Pindot Shadow



52/2724 Pindot Umber



72/2724 Pindot Forest



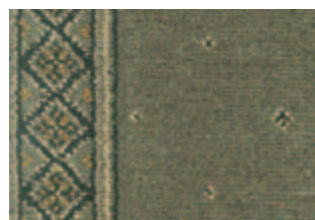
47/2724 Pindot Green



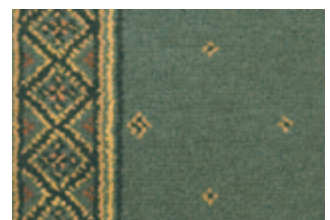
91/2634 Runner Shadow



52/2634 Runner Umber



72/2718 Runner Forest



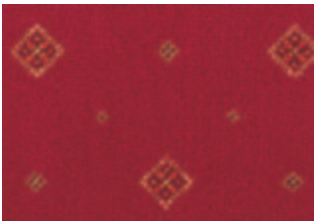
47/2634 Runner Green

Tazmin

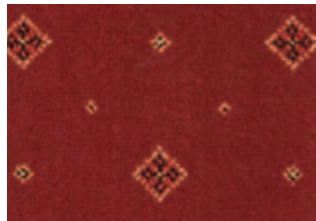
80% Wool / 20% Nylon
Woven Axminster



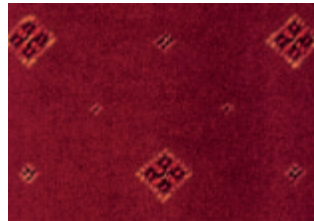
Motif Forest (72/2710)



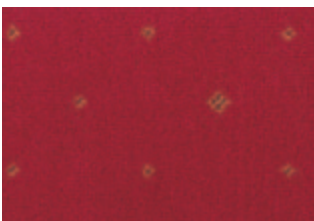
21/2628 Motif Crimson



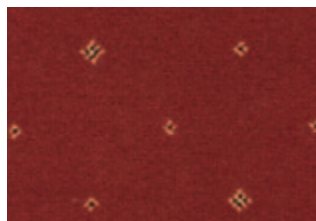
23/2628 Motif Sienna



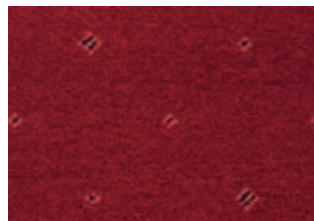
10/2628 Motif Red



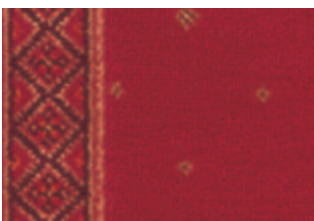
21/2724 Pindot Crimson



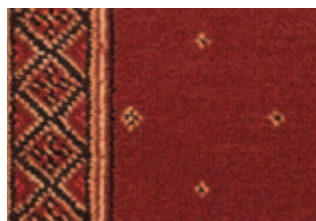
23/2724 Pindot Sienna



10/2724 Pindot Red



21/2634 Runner Crimson



23/2634 Runner Sienna

Glenavy

80% Wool / 20% Nylon
Woven Axminster

Available in 4.57m, 3.66m,
2.74m, 1.83m & 0.91m
Runner 0.91m

Suitable for Heavy Wear

Each carpet design in the Glenavy range is individually inspired and designed. The diversity and elegance of each design offers limitless possibilities in their application.

The beautiful mix of traditional patterns within the Glenavy range instinctively creates interior character and charm.

Glenavy is available in five colour-matching widths, and also includes five co-ordinating runners.

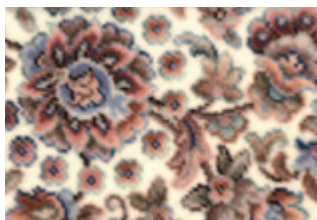
* Please refer to Page 67 for co-ordinating runner



Hampton Court (7/2984)

Classic Traditionals

‘...individually inspired and designed.’



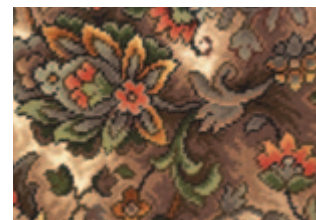
1/2467 White Shirzar



11/2970 Romanza



6/2421 Fezhir



2/2418 Tabriz



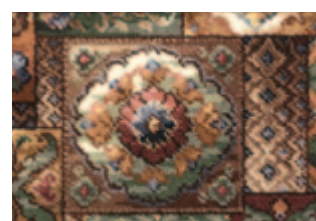
11/2971 Fantasia



7/2984 Hampton Court



6/2414 Mayfayre



6/2474 Siranda

Glenavy

80% Wool / 20% Nylon
Woven Axminster



11/20066 Kimono



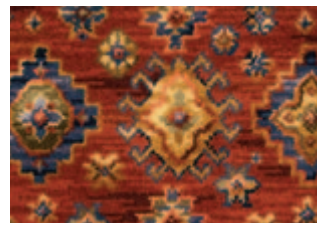
41/20064 Antique Hampton Court



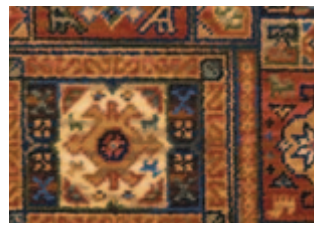
21/20065 Red Hampton Court



21/2133 Red Persian



*81/2055 Kilim



*2/2648 Ethnic Panel Rust



2/2385 Persian Garden



2/3144 Kashmir



2/2162 Overture



4/2353 Green Buttons & Bows



10/2264 Firedance



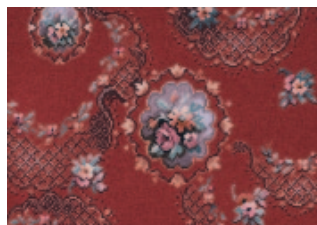
21/2886 Vesuvius



17/2045 Seychelles



4/2452 Green Cameo



64/2442 Rose Cameo



5/2432 Blue Cameo

‘...a beautiful mix of traditional patterns...instinctively creating interior character and charm.’

* Please refer to Page 67 for co-ordinating runner

Glenavy



Glenmoy

80% Wool / 20% Nylon
Woven Axminster

Available in 4.57m, 3.66m,
2.74m, 1.83m & 0.91m

Suitable for Extra Heavy Wear

Glenmoy is a charming collection of thirteen traditionally-patterned woven axminster colourways that exude warmth and integrity.

Within this range, delicate pastel designs sit alongside vividly rich, Persian-inspired creations and traditional plaids.

Glenmoy, one of Ulster's longest standing woven axminster ranges, is suitable for extra heavy domestic wear and comes in a choice of five colour-matching widths.

Classic Traditionals



4/2371 Green Vivaldi



2/2371 Vivaldi



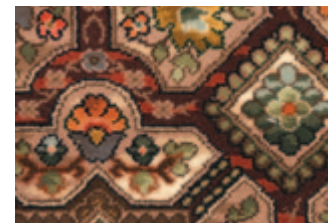
6/2470 Madame Pompadour



1/2280 Toledo



41/2651 Jasmine Garden



2/2157 Seville



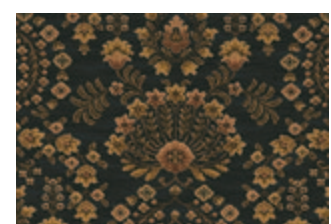
21/2652 Antique Sunset



10/2160 Persian Garden



21/2650 Red Sultan



91/2650 Black Sultan



Robertson (91/200082)

‘...delicate pastel designs sit alongside vividly rich, Persian-inspired creations and traditional plaids.’



Douglas (91/20083)



2/2755 Beige Chisholm



10/2754 Royal Stewart



12/2756 Blackwatch

Please see our colour co-ordination section on pages 70 - 78.

For a full list of co-ordination options please visit www.ulstercarpets.com/colourcoordination



91/200082 Robertson



91/20083 Douglas

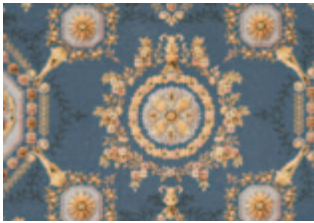
Glendun



1/2431 Canterbury



9/2380 Sage Lorenzo



5/2380 Blue Lorenzo



5/2446 Blue Caliph



3/2152 Samarkand



11/20063 Rosemoor

80% Wool / 20% Nylon
Woven Axminster

Available in 4.57m, 3.66m,
2.74m, 1.83m & 0.91m

Suitable for Extra Heavy Wear

The crème de la crème of Ulster classic designs, Glendun is an elegant collection with a timeless, distinguished look. The five colourways that make up this collection are each suitable for extra heavy wear and designs range from the romantic to the bold.

The Glenshane range is a time-honoured selection of intricate, traditional woven axminster designs. Glenshane is a popular choice due to its practicality and detail in design, and is suitable for general wear.

Glenshane

80% Wool / 20% Nylon
Woven Axminster

Available in 4.57m, 3.66m,
2.74m, 1.83m & 0.91m

Suitable for General Wear



6/2439 Scroll Chintz



2/2435 Empire Scroll



51/2435 Empire Garden



the mix

the mix

Strata Stone (86604-8)

the mix

80% Wool / 20% Nylon
Woven Axminster

Available in 4m wide

Suitable for Extra Heavy Wear/
Heavy Contract Wear

the mix is a unique woven axminster collection that includes eight contemporary designs offering a total of twenty one different colourways, each available in 4m wide.

The stylish designs range from the subtle to the dramatic; the attractive colour palette creates instant appeal.

the mix range also co-ordinates with our plain woven wilton and axminster carpets.

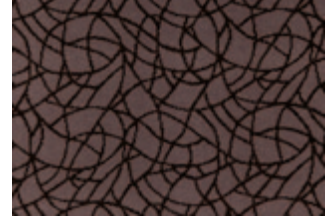
the mix

Strata

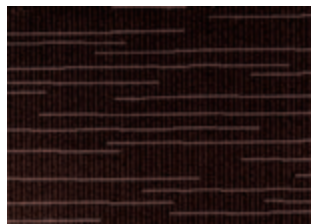


86604-8 Strata Stone

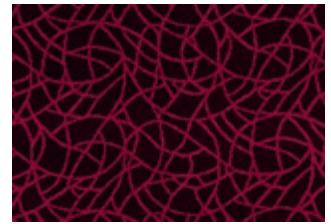
Crackle



86551-7 Crackle Mole

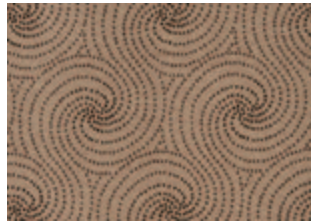


86604-10 Strata Buffalo

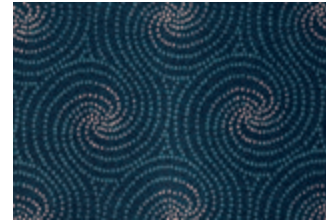


86839-2 Crackle Cranberry

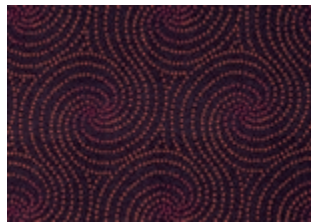
Swirl



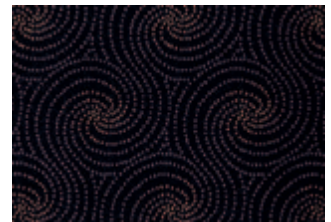
86440-10 Swirl Linum



86440-27 Swirl Peacock



86440-11 Swirl Berry



86440-14 Swirl Panther



Swirl Berry (86440-11)



Bloom Moonlight (101368-1)



Contour Taupe (83982-6)

Contour

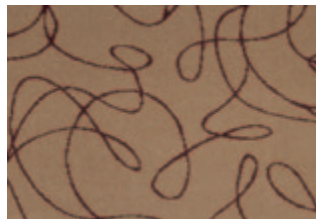
Freedom

Bloom

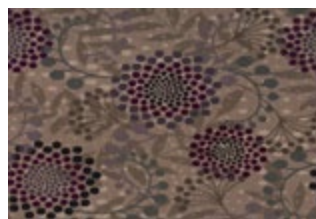
Shimmer



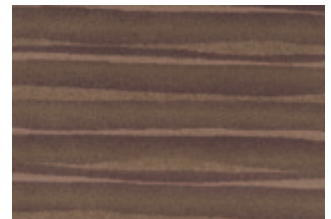
83982-6 Contour Taupe



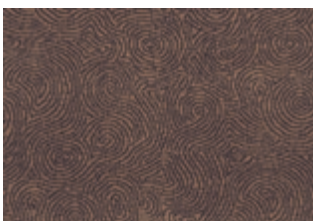
86169-10 Freedom Oyster



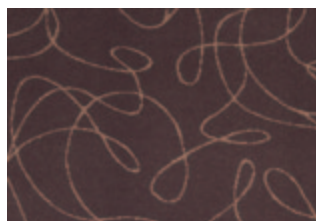
100690-2 Bloom Serenity



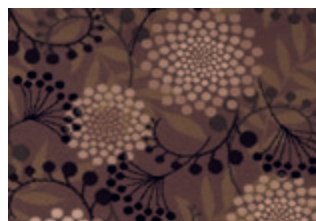
101000-1 Shimmer Drift



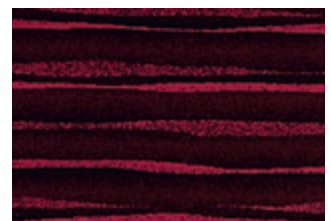
83982-18 Contour Fossil



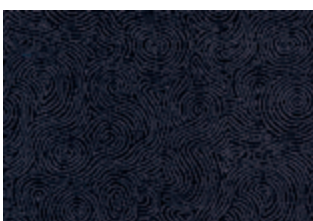
86169-4 Freedom Ash



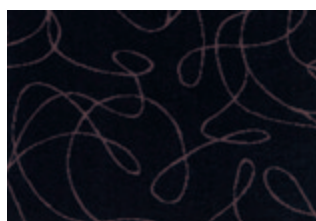
101371-1 Bloom Mystique



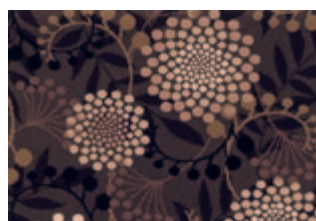
101000-6 Shimmer Cherry



83982-4 Contour Graphite



86169-1 Freedom Slate

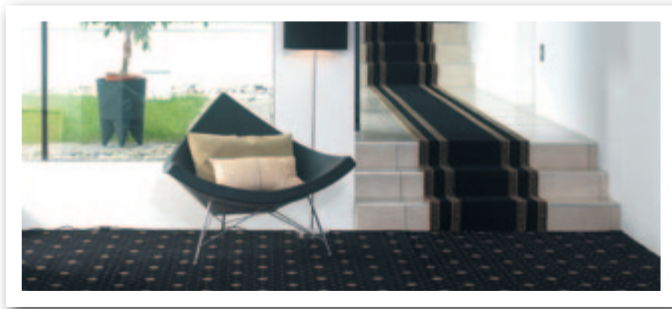


101368-1 Bloom Moonlight



101000-3 Shimmer Mulberry

Runners



Athenia - Runner Black (91/2711) & Motif Black (91/2707)

Ulster provides a wide selection of woven axminster runners in designs that range from the traditional to the contemporary.

Available in 0.91m or 0.69m wide, a runner is the perfect way to continue a coordinated look throughout the home and over various levels.

Alternatively runners can be used independently to create a statement on a stairway or along a corridor.



Country House Collection Kazan - Tench Green Runner (91/20019) & Medallion (91/20018)

Anatolia (0.69m wide)



42/2289 Lotus



41/2289 Dune



43/2289 Tunis



51/2289 Pampas



44/2289 Nile Gold



72/2289 Isis



11/2289 Delta



52/2289 Luxor



81/2299 Fez

For those consumers who wish to use the medallion design on their staircase, please advise that the medallion element is not centralised within the overall design. To counteract this, please recommend the following:

- Use the runner design, as the medallion is centrally positioned
- The versatility and even distribution of the scroll design sits perfectly on a staircase

Alternatively, if neither of these options are applicable, a 1.83m wide cut will be needed from which the required width will cut to ensure the medallion is centered. Ulster Carpets is not responsible for the subsequent extra cost.

Runners

80% Wool / 20% Nylon
Woven Axminster

Athenia (0.69m wide)



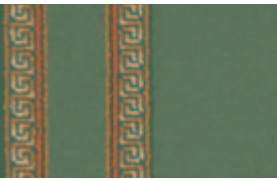
10/2583 Red



51/20056 Khaki



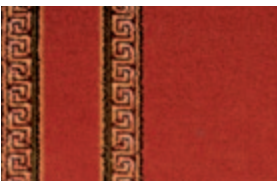
45/2583 Pale Green



4/2583 Green



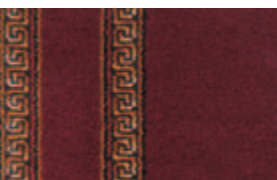
9/2583 Turquoise



37/2583 Spicy Tomato



17/2583 Damask Rose



22/2583 Wine



12/2583 Royal Blue



91/2711 Black

Country House Kazan (0.91m wide)



91/20019 Tench Green



13/20019 Antique White



31/20019 Powder Blue



51/20019 Sepia



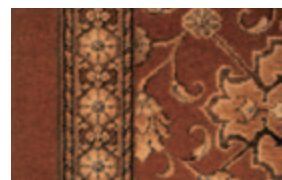
92/20019 Viceroy Grey



41/20019 Persian Gold



81/20019 Burnt Sienna



21/20019 Indian Red

Runners

80% Wool / 20% Nylon
Woven Axminster

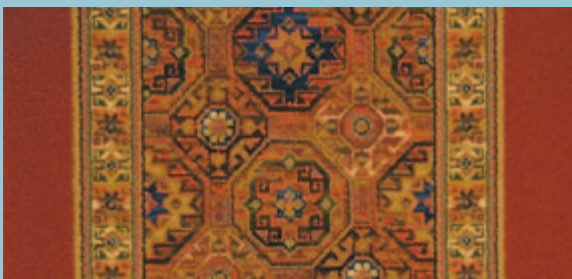
Glenavy (0.91m wide)



11/2136 Hampton Court



41/2203 Ethnic Panel Sand



21/2135 Red Persian



81/2138 Kilim



1/2137 Ethnic Panel Rust



Hampton Court (11/2136)

Runners

80% Wool / 20% Nylon
Woven Axminster

Sheriden (0.69m wide)



42/2574 Provence



17/2605 Maroc



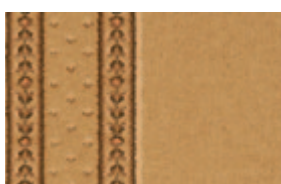
Sheriden - Bordeaux Runner (22/2576) & Cameo (22/2614)



21/2605 Straw



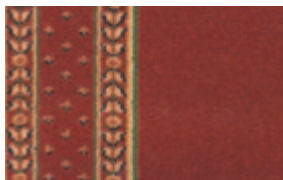
13/2574 Regency Cream



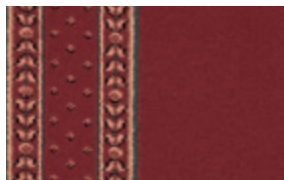
43/2622 Florence Gold



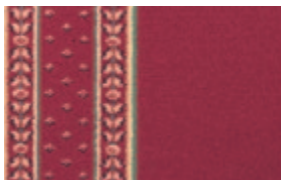
51/2574 Downton



32/2605 Tuscany



10/2605 Royal Red



73/2605 Claret



22/2576 Bordeaux



91/2574 Acorn



45/2605 Jade



4/2605 Sherwood



52/2605 Royal Blue

Runners

80% Wool / 20% Nylon
Woven Axminster

Tazmin (0.69m wide)



‘...visually stunning
on a staircase, a
runner is an instant
style statement.’

11/2634 Camel



41/2634 Sand



43/2716 Honey



51/2634 Coppertone



53/2716 Kaftan



91/2634 Shadow



52/2634 Umber



72/2718 Forest



47/2634 Green



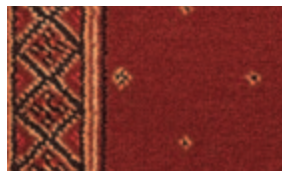
21/2634 Crimson



01/2634 Terracotta



10/2634 Red



23/2634 Sienna

To view the co-ordinating designs
and colourways available for
each of the runners featured
within this section please see the
relevant range page(s) below:

Anatolia	Pgs 10 - 12
Athenia	Pgs 49 - 51
Country House Kazan	Pgs 6 - 7
Glenavy	Pgs 55 - 57
Sheriden	Pgs 46 - 48
Tazmin	Pgs 52 - 54

Colour Co-ordination

The sheer volume of products on the market can make the job of co-ordinating your carpets seem an endless and often overwhelming task.

Our recently-launched ranges have been designed to co-ordinate beautifully with our magnificent selection of plain carpets.

The following pages include just some of our favourite product combinations, designed to provide inspiration and guidance on how to create an Ulster scheme which flows from room to room.

For a full list of co-ordination options please visit www.ulstercarpets.com/colourcoordination



Top - Bottom: w Eider (N5004), Rowan Fawn (41/20043), Plover (N5002), Cove Fawn (41/20047)

Anatolia



42/2287 Anatolia Medallion Lotus (Pg 10)



41/2287 Anatolia Medallion Dune (Pg 10)



51/2287 Anatolia Medallion Pampas (Pg 11)



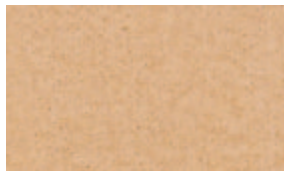
44/2287 Anatolia Medallion Nile Gold (Pg11)



43/1319 Open Spaces Dubai Demerara (Pg 42)



43/1319 Open Spaces Dubai Demerara (Pg 42)



W9701 Ulster Velvet Arabesque (Pg 27)



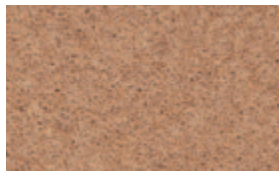
W9702 Ulster Velvet Pyramid (Pg 27)



W2607 Ulster Velvet Fauna (Pg 27)



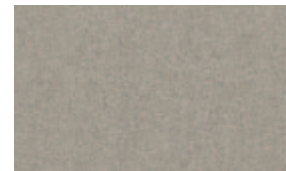
Y1040 York Wilton Sorrel (Pg 36)



Y1029 York Wilton Walnut (Pg 34)



Y1037 York Wilton Safari (Pg 33)



G1022 Grange Wilton French Grey (Pg 31)

Colour Co-ordination

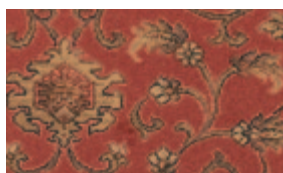
Anatolia



43/2287 Anatolia Medallion Tunis (Pg 11)



11/2287 Anatolia Medallion Delta (Pg 11)



81/2293 Anatolia Medallion Fez (Pg 12)



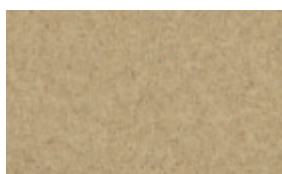
72/2287 Anatolia Medallion Isis (Pg 12)



52/2287 Anatolia Medallion Luxor (Pg 12)



W2023 Ulster Velvet Straw (Pg 27)



N5001 Natural Choice Plains Alpaca (Pg 37)



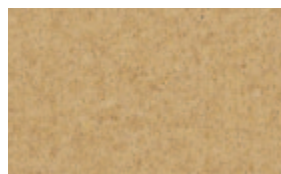
W8618 Ulster Velvet Honey Gold (Pg 27)



W2023 Ulster Velvet Straw (Pg 27)



W2013 Ulster Velvet Oatmeal (Pg 28)



Y1048 York Wilton Sahara (Pg 35)



64/1431 Open Spaces Queenstown Jute (Pg 43)



Y1037 York Wilton Safari (Pg 33)



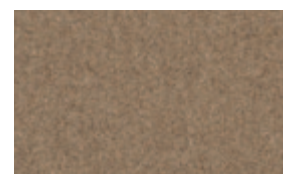
W2607 Ulster Velvet Fauna (Pg 27)



N5002 Natural Choice Plains Plover (Pg 37)



Y1037 York Wilton Safari (Pg 33)



N5003 Natural Choice Plains Cobble (Pg 37)



Y1023 York Wilton Mineral (Pg 33)



G1002 Grange Wilton Wattle (Pg 31)

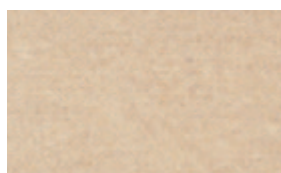
Blossom



51/20053 Blossom Opal (Pg 14)



25/1310 Open Spaces Morocco Fair Isle (Pg 36)



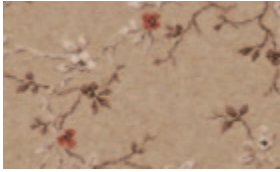
W2015 Ulster Velvet Suede (Pg 22)



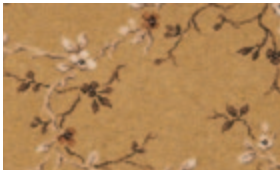
N5003 Natural Choice Plains Cobble (Pg 32)

Colour Co-ordination

Blossom



11/20053 Blossom
Camellia (Pg 14)



41/20053 Blossom
Sungold (Pg 14)



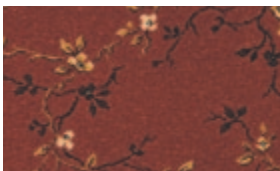
52/20053 Blossom
Bronze (Pg 14)



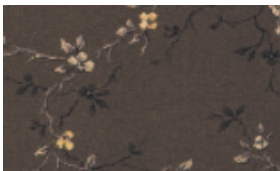
54/20053 Blossom
Incense (Pg 14)



91/20053 Blossom
Fig (Pg 14)



21/20053 Blossom
Laquer (Pg 14)



53/20053 Blossom
Zen (Pg 14)



W2605 Ulster Velvet
Jersey (Pg 27)



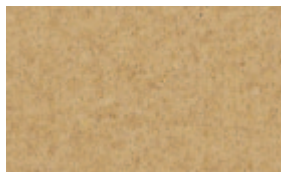
W2023 Ulster Velvet
Straw (Pg 27)



43/1319 Open Spaces Dubai
Demerara (Pg 42)



G1005 Grange Wilton
Partridge (Pg 32)



Y1048 York Wilton
Sahara (Pg 35)



Y1037 York Wilton
Safari (Pg 33)



W9209 Ulster Velvet
Canvas (Pg 28)



Y1030 York Wilton
Hemp (Pg 33)



W9702 Ulster Velvet
Pyramid (Pg 27)



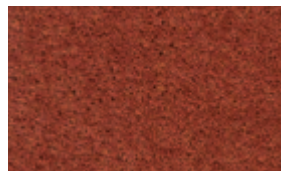
W2607 Ulster Velvet
Fauna (Pg 27)



Y1027 York Wilton
Brick (Pg 35)



Y1037 York Wilton
Safari (Pg 33)



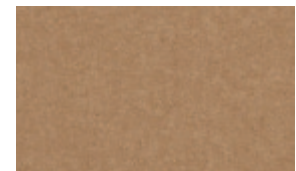
Y1027 York Wilton
Brick (Pg 35)



Y1032 York Wilton
Flint (Pg 33)



N5002 Natural Choice Plains
Plover (Pg 37)



G1017 Grange Wilton
Giltwood (Pg 32)

Colour Co-ordination

Country House Collection Beaumont



11/20016 Beaumont
Chalk Downs (Pg 8)



14/20016 Beaumont
Osprey (Pg 8)



91/20016 Beaumont
Turtle Dove (Pg 8)



12/20016 Beaumont
Brindle (Pg 8)



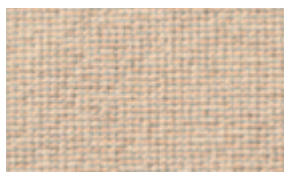
48/20016 Beaumont
Croft Gold (Pg 8)



47/20016 Beaumont
Antique Green (Pg 8)



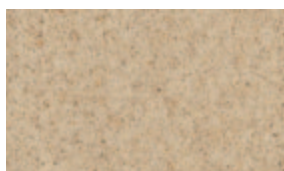
15/20016 Beaumont
Grouse (Pg 8)



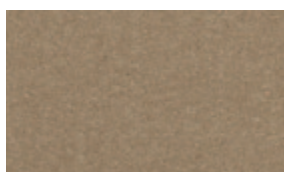
30/1153 Open Spaces
Borneo Muslin (Pg 42)



G1007 Grange Wilton
Spelt (Pg 31)



Y1047 York Wilton
Parchment (Pg 34)



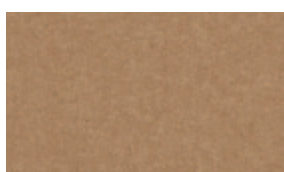
G1013 Grange Wilton
Romney (Pg 31)



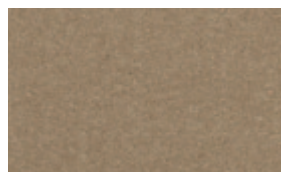
W8618 Ulster Velvet
Honey Gold (Pg 27)



W8618 Ulster Velvet
Honey Gold (Pg 27)



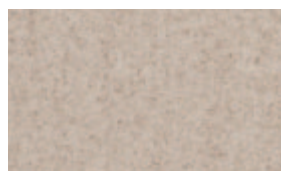
G1017 Grange Wilton
Giltwood (Pg 32)



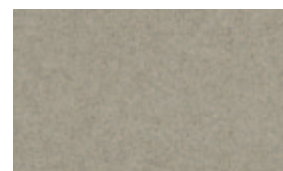
G1013 Grange Wilton
Romney (Pg 31)



N5003 Natural Choice Plains
Cobble (Pg 37)



G1004 Grange Wilton
Flagstone (Pg 32)



G1015 Grange Wilton
Woolsack (Pg 31)



Y1037 York Wilton
Safari (Pg 33)



Y1027 York Wilton
Brick (Pg 35)

Colour Co-ordination

Country House Collection Beaumont



51/20016 Beaumont
Balmoral Red (Pg 8)



W8618 Ulster Velvet
Honey Gold (Pg 27)



Y1043 York Wilton
Brandysnap (Pg 35)

Country House Collection Kazan



31/20018 Kazan
Powder Blue (Pg 6)



W2015 Ulster Velvet
Suede (Pg 27)



W9209 Ulster Velvet
Canvas (Pg 28)



G1022 Grange Wilton
French Grey (Pg 31)



13/20018 Kazan
Antique White (Pg 6)



30/1153 Open Spaces
Borneo Muslin (Pg 42)



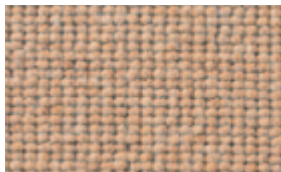
N5001 Natural Choice Plains
Alpaca (Pg 37)



G1013 Grange Wilton
Romney (Pg 31)



51/20018 Kazan
Sepia (Pg 6)



43/1319 Open Spaces Dubai
Demerara (Pg 42)



N5002 Natural Choice Plains
Plover (Pg 37)



91/20018 Kazan
Tench Green (Pg 6)



Y1037 York Wilton
Safari (Pg 33)



41/20018 Kazan
Persian Gold (Pg 7)



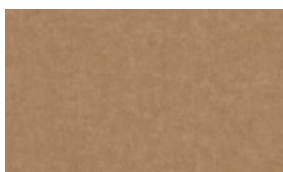
Y1037 York Wilton
Safari (Pg 33)

Colour Co-ordination

Country House Collection Kazan



21/20018 Kazan
Indian Red (Pg 7)



G1017 Grange Wilton
Giltwood (Pg 32)



Y1037 York Wilton
Safari (Pg 33)



92/20018 Kazan
Viceroy Grey (Pg 7)

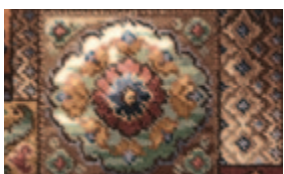


G1007 Grange Wilton
Spelt (Pg 31)



N5003 Natural Choice Plains
Cobble (Pg 37)

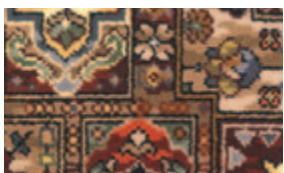
Glenavy



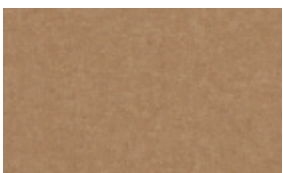
6/2474 Glenavy
Siranda (Pg 51)



Y1032 York Wilton
Flint (Pg 33)



2/3144 Glenavy
Kashmir (Pg 52)



G1017 Grange Wilton
Giltwood (Pg 32)



Y1037 York Wilton
Safari (Pg 33)



G1023 Grange Wilton
Red Setter (Pg 32)



4/2353 Glenavy
Green Buttons & Bows (Pg 52)



Y1049 York Wilton
Spruce (Pg 36)



W835 Ulster Velvet
Jade (Pg 27)



Y1029 York Wilton
Walnut (Pg 34)

Colour Co-ordination

Glenavy



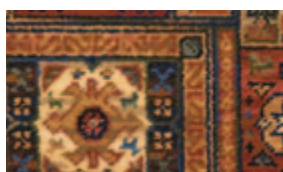
*21/2133 Glenavy
Red Persian (Pg 56)



Y1010 York Wilton
Old Gold (Pg 35)



Y1019 York Wilton
Red Earth (Pg 35)



*2/2648 Glenavy
Ethnic Panel Rust (Pg 55)



W8618 Ulster Velvet
Honey Gold (Pg 27)



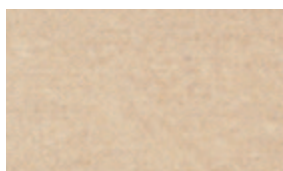
Y1043 York Wilton
Brandysnap (Pg 35)



G1023 Grange Wilton
Red Setter (Pg 32)



11/2970 Glenavy
Romanza (Pg 55)



W2015 Ulster Velvet
Suede (Pg 27)



W2013 Ulster Velvet
Oatmeal (Pg 28)



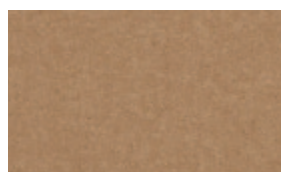
G1022 Grange Wilton
French Grey (Pg 31)



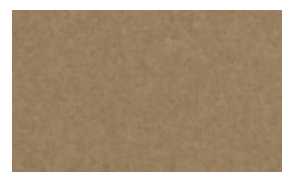
11/2971 Glenavy
Fantasia (Pg 55)



W2023 Ulster Velvet
Straw (Pg 27)



G1017 Grange Wilton
Giltwood (Pg 32)



G1014 Grange Wilton
Appleby (Pg 32)



*7/2984 Glenavy
Hampton Court (Pg 55)



Y1038 York Wilton
Linseed (Pg 35)



Y1037 York Wilton
Safari (Pg 33)



Y1049 York Wilton
Spruce (Pg 36)

* Please refer to Page 61 for co-ordinating runner

Colour Co-ordination

Natural Choice Axminster



51/20043 Natural Choice
Rowan Dove (Pg 22)



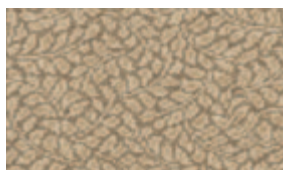
61/1319 Open Spaces Dubai
Limewash (Pg 42)



N5007 Natural Choice Plains
Platinum (Pg 37)



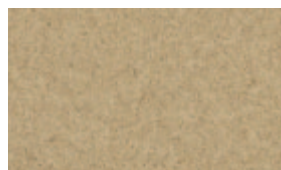
G1015 Grange Wilton
Woollack (Pg 31)



41/20043 Natural Choice
Rowan Fawn (Pg 22)



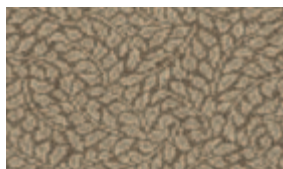
30/1153 Open Spaces
Borneo Muslin (Pg 42)



N5001 Natural Choice Plains
Alpaca (Pg 37)



N5003 Natural Choice Plains
Cobble (Pg 37)



91/20043 Natural Choice
Rowan Slate (Pg 22)



64/1428 Open Spaces
Auckland Hare (Pg 44)



N5005 Natural Choice Plains
Pumice (Pg 37)



51/20048 Natural Choice
Chenille Dove (Pg 22)



64/1431 Open Spaces
Queenstown Jute (Pg 43)



N5007 Natural Choice Plains
Platinum (Pg 37)



N5005 Natural Choice Plains
Pumice (Pg 37)



41/20048 Natural Choice
Chenille Fawn (Pg 22)



G1007 Grange Wilton
Spelt (Pg 31)



N5003 Natural Choice Plains
Cobble (Pg 37)



91/20048 Natural Choice
Chenille Slate (Pg 22)



64/1431 Open Spaces
Queenstown Jute (Pg 43)



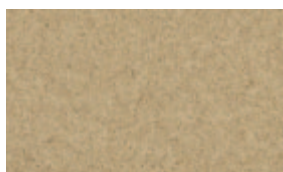
N5005 Natural Choice Plains
Pumice (Pg 37)

Colour Co-ordination

Natural Choice Axminster



41/20047 Natural Choice Cove Fawn (Pg 22)



N5001 Natural Choice Plains Alpaca (Pg 37)



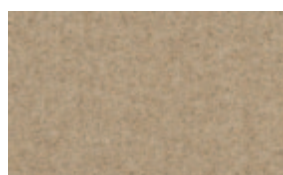
G1007 Grange Wilton Spelt (Pg 31)



N5002 Natural Choice Plains Plover (Pg 37)



41/20046 Natural Choice Shale Fawn (Pg 16)



G1007 Grange Wilton Spelt (Pg 31)



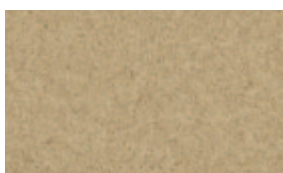
W9209 Ulster Velvet Canvas (Pg 28)



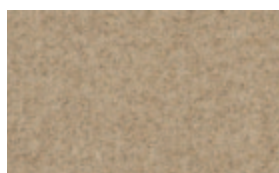
N5003 Natural Choice Plains Cobble (Pg 37)



41/20045 Natural Choice Fresco Fawn (Pg 17)



N5001 Natural Choice Plains Alpaca (Pg 37)



G1007 Grange Wilton Spelt (Pg 31)



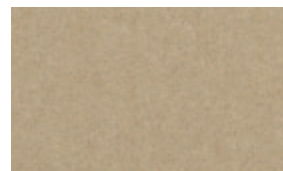
91/20045 Natural Choice Fresco Slate (Pg 17)



62/1428 Open Spaces Auckland Hammock (Pg 44)



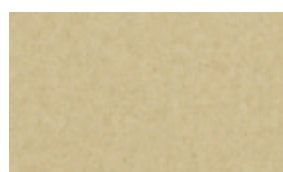
N5005 Natural Choice Plains Pumice (Pg 37)



G1012 Grange Wilton Tallow (Pg 231)



11/20042 Natural Choice Garland Natural (Pg 17)



N5004 Natural Choice Plains Eider (Pg 37)



N5002 Natural Choice Plains Plover (Pg 37)



N5003 Natural Choice Plains Cobble (Pg 37)

What are QR Codes?

QR stands for quick response. If you have a smartphone and internet access you can use the QR Codes included in this guide to be taken to the relevant page at www.ulstercarpets.com

How do you use them?

Simply download a free QR code reader from your app store, open it up on your smartphone, scan the QR code with your screen to view the relevant information at www.ulstercarpets.com



Scanning this QR code will take you directly to www.ulstercarpets.com/colourcoordination

Technical Information

Please see the following pages for technical information related to each current Ulster stock product and range.

Range/Design	Ref No	Widths Available (m)	Repeat Length	Repeat Type	Suitability	Centres on 0.91m	Tog Rating
Anatolia							
Scroll	2288, 2298	4.57, 3.66, 2.74, 1.83, 0.91	0.46m	Self Match	Extra Heavy Wear	No	1.7
Medallion	2287, 2293,	4.57, 3.66, 2.74, 1.83, 0.91	0.91m	Self Match	Extra Heavy Wear	No	1.7
Shirvan	2374, 2623	4.57, 3.66, 2.74, 1.83, 0.91	0.91m	Self Match	Extra Heavy Wear	No	1.7
Runner	2289, 2299	0.69	0.91m	Runner	Extra Heavy Wear	n/a	1.7
Ariana							
All	2712, 2713	4.57, 3.66, 2.74, 1.83, 0.91	0.85m	Self Match	Heavy Wear	No	1.7
Athenia							
Motif	2566, 2707	4.57, 3.66, 2.74, 1.83, 0.91	0.28m	Self Match	Heavy Wear	No	1.7
Pindot	2572	4.57, 3.66, 2.74, 1.83, 0.91	0.09m	Self Match	Heavy Wear	No	1.7
Runner	2583, 2711, 20056	0.69	0.03m	Runner	Heavy Wear	n/a	1.7
Boho Collection							
Tribe	30001	4, 3, 2, 1	0.29m	Self Match	Heavy Wear	No	
Chic	30002	4, 3, 2, 1	0.02m	Self Match	Heavy Wear	No	
Bloomsbury	30003	4, 3, 2, 1	1m	Self Match	Heavy Wear	No	
Hemingway	30004	4, 3, 2, 1	0.29m	Self Match	Heavy Wear	No	
Rhapsody	30005	4, 3, 2, 1	1m	Self Match	Heavy Wear	No	
Hamilton	30006	4, 3, 2, 1	0.25m	Self Match	Heavy Wear	No	
Blossom							
All	20053	4.57, 3.66, 2.74, 1.83, 0.91	0.91m	Self Match	Heavy Wear	No	1.7
Braeburn							
All	20084	4.57, 3.66, 2.74, 1.83, 0.91	0.45m	Self Match	Heavy Wear	No	1.7
Country House							
Beaumont	20016	4.57, 3.66, 2.74, 1.83, 0.91	0.30m	Self Match	Extra Heavy Wear	Yes	1.5
Kazan	20018	4.57, 3.66, 2.74, 1.83, 0.91	0.91m	Self Match	Extra Heavy Wear	Yes	1.5
Kazan Runner	20019	0.91	0.91m	Runner	Extra Heavy Wear	Yes	1.5
Heritage Twist							
All	All	5, 4, 3, 2, 1	n/a	n/a	Extra Heavy Wear	n/a	1.4

Technical Information

NOTE* The tog rating is calculated using carpet tog + underlay tog - 1.

e.g. Sheriden (1.50) + Underlay (typically 1) - 1 = 1.50. All of our carpets are suitable for use over underfloor heating in combination with an appropriate underlay.

Range/Design	Ref No	Widths Available (m)	Repeat Length	Repeat Type	Suitability	Centres on 0.91m	Tog Rating
Elements Organza							
All	2720	4, 3, 2, 1	0.31m	Self Match	Extra Heavy Wear	No	1.7
Glenavy							
Kilim	81/2055	4.57, 3.66, 2.74, 1.83, 0.91	0.47m	Self Match	Heavy Wear	No	1.7
Vesuvius, Fantasia	21/2886, 11/2971	4.57, 3.66, 2.74, 1.83, 0.91	0.94m	Self Match	Heavy Wear	No	1.7
Romanza	11/2970	4.57, 3.66, 2.74, 1.83, 0.91	0.94m	Self Match	Heavy Wear	No	1.7
Ethnic Panel Rust	2/2648	4.57, 3.66, 2.74, 1.83, 0.91	0.95m	Self Match	Heavy Wear	Yes	1.7
Ethnic Panel Sand	41/2116	4.57, 3.66, 2.74, 1.83, 0.91	0.95m	Self Match	Heavy Wear	Yes	1.7
Glenavy							
Red Persian	21/2133	4.57, 3.66, 2.74, 1.83, 0.91	0.95m	Self Match	Heavy Wear	Yes	1.7
Siranda	6/2474	4.57, 3.66, 2.74, 1.83, 0.91	0.95m	Self Match	Heavy Wear	No	1.7
Persian Garden	2/2385	4.57, 3.66, 2.74, 1.83, 0.91	0.95m	Half Drop	Heavy Wear	No	1.7
White Shirzar	1/2467	4.57, 3.66, 2.74, 1.83, 0.91	0.95m	Half Drop	Heavy Wear	Yes	1.7
Overture	2/2162	4.57, 3.66, 2.74, 1.83, 0.91	0.95m	Half Drop	Heavy Wear	No	1.7
Hampton Court	7/2984	4.57, 3.66, 2.74, 1.83, 0.91	0.95m	Half Drop	Heavy Wear	No	1.7
Blue Cameo, Green Cameo	5/2432, 4/2452	4.57, 3.66, 2.74, 1.83, 0.91	0.95m	Half Drop	Heavy Wear	No	1.7
Rose Cameo	64/2442	4.57, 3.66, 2.74, 1.83, 0.91	0.95m	Half Drop	Heavy Wear	No	1.7
Fezhir, Green Buttons & Bows	6/2421, 4/2353	4.57, 3.66, 2.74, 1.83, 0.91	0.95m	Half Drop	Heavy Wear	No	1.7
Mayfayre	6/2414	4.57, 3.66, 2.74, 1.83, 0.91	0.95m	Half Drop	Heavy Wear	No	1.7
Firedance	10/2264	4.57, 3.66, 2.74, 1.83, 0.91	0.95m	Half Drop	Heavy Wear	No	1.7
Tabriz	2/2418	4.57, 3.66, 2.74, 1.83, 0.91	0.95m	Half Drop	Heavy Wear	Yes	1.7
Kashmir	2/3144	4.57, 3.66, 2.74, 1.83, 0.91	0.95m	Half Drop	Heavy Wear	No	1.7
Seychelles	17/2045	4.57, 3.66, 2.74, 1.83, 0.91	1.08m	Half Drop	Heavy Wear	No	1.7
Glenavy Runners							
All	All	0.91	0.95m	Runner	Heavy Wear	Yes	1.7

Technical Information

NOTE* The tog rating is calculated using carpet tog + underlay tog - 1.

e.g. Sheriden (1.50) + Underlay (typically 1) - 1 = 1.50. All of our carpets are suitable for use over underfloor heating in combination with an appropriate underlay.

Range/Design	Ref No	Widths Available (m)	Repeat Length	Repeat Type	Suitability	Centres on 0.91m	Tog Rating
Glendun							
Blue Lorenzo, Sage Lorenzo	5/2380, 9/2380	4.57, 3.66, 2.74, 1.83, 0.91	0.91m	Self Match	Extra Heavy Wear	Yes	1.8
Versailles	11/2965	4.57, 3.66, 2.74, 1.83, 0.91	0.91m	Self Match	Extra Heavy Wear	Yes	1.8
Samarkand	3/2152	4.57, 3.66, 2.74, 1.83, 0.91	0.63m	Self Match	Extra Heavy Wear	Yes	1.8
Blue Caliph, Canterbury	5/2446, 1/2431	4.57, 3.66, 2.74, 1.83, 0.91	0.91m	Half Drop	Extra Heavy Wear	No	1.8
Glenmoy							
Douglas	91/20083	4.57, 3.66, 2.74, 1.83, 0.91	0.22m	Self Match	Extra Heavy Wear	Yes	
Robertson	91/20082	4.57, 3.66, 2.74, 1.83, 0.91	0.30m	Self Match	Extra Heavy Wear	Yes	1.7
Blackwatch	12/2756	4.57, 3.66, 2.74, 1.83, 0.91	0.31m	Self Match	Extra Heavy Wear	Yes	1.7
Beige Chisholm, Royal Stewart	2/2755, 10/2754	4.57, 3.66, 2.74, 1.83, 0.91	0.46m	Self Match	Extra Heavy Wear	Yes	1.7
Antique Sunset	21/2652	4.57, 3.66, 2.74, 1.83, 0.91	0.80m	Self Match	Extra Heavy Wear	Yes	1.7
Seville	2/2157	4.57, 3.66, 2.74, 1.83, 0.91	0.91m	Self Match	Extra Heavy Wear	Yes	1.7
Red Sultan, Black Sultan	21/2650, 91/2650	4.57, 3.66, 2.74, 1.83, 0.91	0.91m	Self Match	Extra Heavy Wear	Yes	1.7
Jasmine Garden	41/2651	4.57, 3.66, 2.74, 1.83, 0.91	0.91m	Half Drop	Extra Heavy Wear	Yes	1.7
Toledo, Persian Garden	1/2280, 10/2160	4.57, 3.66, 2.74, 1.83, 0.91	0.91m	Half Drop	Extra Heavy Wear	Yes	1.7
Madame Pompadour, Vivald	6/2470, 2/2371	4.57, 3.66, 2.74, 1.83, 0.91	0.91m	Half Drop	Extra Heavy Wear	No	1.7
Glenshane							
Oriental Panel	6/2534	4.57, 3.66, 2.74, 1.83, 0.91	0.88m	Self Match	General Wear	Yes	1.7
Empire Scroll, Scroll Chintz	2/2435, 6/2439	4.57, 3.66, 2.74, 1.83, 0.91	0.88m	Half Drop	General Wear	No	1.7
Empire Garden	51/2435	4.57, 3.66, 2.74, 1.83, 0.91	0.88m	Half Drop	General Wear	No	1.7

Technical Information

Range/Design	Ref No	Widths Available (m)	Repeat Length	Repeat Type	Suitability	Centres on 0.91m	Tog Rating
Grange Wilton All	All	5, 4, 3, 2, 1	n/a	n/a	Extra Heavy Wear	n/a	1.5
Natural Choice Axminster Chenille Cove Ellipse Fresco Rowan Shale Tapestry	20048 20047 20044 20045 20043 20046 20041	4.57, 3.66, 2.74, 1.83, 0.91 4.57, 3.66, 2.74, 1.83, 0.91 4.57, 3.66, 2.74, 1.83, 0.91 4.57, 3.66, 2.74, 1.83, 0.91 4.57, 3.66, 2.74, 1.83, 0.91 4.57, 3.66, 2.74, 1.83, 0.91 4.57, 3.66, 2.74, 1.83, 0.91	0.61m 0.41m 0.41m 0.46m 0.46m 0.21m 0.92m	Self Match Self Match Half Drop Self Match Half Drop Self Match Self Match	Extra Heavy Wear Extra Heavy Wear Extra Heavy Wear Extra Heavy Wear Extra Heavy Wear Extra Heavy Wear Extra Heavy Wear	No No No No No No No	1.8 1.8 1.8 1.8 1.8 1.8 1.8
Natural Choice Plains All	All	5, 4, 3, 2, 1	n/a	n/a	Extra Heavy Wear	n/a	1.5
Open Spaces Monaco Panama Capri Borneo Dubai	1175 1170 11731153 1320, 1319	5, 4, 3, 2, 1 5, 4, 3, 2, 1 5, 4, 3, 2, 1 5, 4, 3, 2, 1 5, 4, 3, 2, 1	n/a n/a n/a n/a n/a	n/a n/a n/a n/a n/a	Heavy Wear Heavy Wear Heavy Wear Heavy Wear Heavy Wear	n/a n/a n/a n/a n/a	1.2 1.6
Open Spaces (Laneve) Auckland Queenstown Wellington Stripe	1428 1431 1433	5, 4, 3, 2, 1 5, 4, 3, 2, 1 5, 4, 3, 2, 1	n/a n/a n/a	n/a n/a n/a	Heavy Wear Heavy Wear Heavy Wear	n/a n/a n/a	1.2 1.2 1.2

Technical Information

Range/Design	Ref No	Widths Available (m)	Repeat Length	Repeat Type	Suitability	Centres on 0.91m	Tog Rating
Sheriden							
Cameo	2461, 2614	4.57, 3.66, 2.74, 1.83, 0.91	0.31m	Self Match	Extra Heavy Wear	No	1.5
	2558, 2617	4.57, 3.66, 2.74, 1.83, 0.91	0.31m	Self Match	Extra Heavy Wear	No	1.5
Pindot	2462, 2562	4.57, 3.66, 2.74, 1.83, 0.91	0.05m	Self Match	Extra Heavy Wear	No	1.5
Runner	2605, 2574,	0.69	0.15m	Runner	Extra Heavy Wear	n/a	1.5
	2622, 2576	0.69	0.15m	Runner	Extra Heavy Wear	n/a	1.5
Tazmin							
Motif, Pindot	2628, 2710, 2724	4.57, 3.66, 2.74, 1.83, 0.91	0.23m	Self Match	Heavy Wear	Yes	1.7
Runner	2634, 2716, 2718	0.69	0.46m	Runner	Heavy Wear	n/a	1.7
the Mix							
Bloom	101371-1, 101368-1,	4	100cm x 100cm	Half Drop	All products within the Mix range are suitable for Extra Heavy Domestic / Heavy Contract Wear	No	1.5
	100690-2	4	100cm x 100cm	Half Drop		No	1.5
Contour	83982-4, 83982-6,	4	50cm x 50.2cm	Half Drop		No	1.5
	83982-18	4	50cm x 50.2cm	Half Drop		No	1.5
Crackle	86839-2, 86839-3,	4	50cm x 50.2cm	Half Drop		No	1.5
	86551-7,	4	50cm x 50.2cm	Half Drop		No	1.5
Freedom	86169-1, 86169-4,	4	100cm x 98.8cm	Half Drop		No	1.5
	86169-10	4	100cm x 98.8cm	Half Drop		No	1.5
Shimmer	101000-1, 101000-3,	4	100cm x 100cm	Self Match		No	1.5
	101000-6	4	100cm x 100cm	Self Match		No	1.5
Silhouette	101637-1	4	100cm x 100cm	Half Drop		No	1.5
Strata	86604-8, 86604-10	4	200cm x 100cm	Self Match		No	1.5
Swirl	86440-10, 86440-11,	4	50cm x 39cm	Self Match		No	1.5
	86440-14, 86440-27	4	50cm x 39cm	Self Match		No	1.5
Ulster Velvet							
All	All	5, 4, 3, 2, 1	n/a	n/a	Extra Heavy Wear	n/a	1.5
York Wilton							
All	All	5, 4, 3, 2, 1	n/a	n/a	Extra Heavy Wear	n/a	1.5

Additional Information

Retailers & Consumers

Ulster strives to provide you, our retailers and consumers, with the best possible service; we offer a range of tools to assist with that all-important purchasing decision.

Ordering Samples

At Ulster we know that seeing an image in a brochure is nothing like holding and feeling our actual product in your hand. Samples are of crucial importance to both you - our retailers - and to our consumers. Often the inspiration for interior decoration (as well as essential tools in the matching of already-purchased furnishings and accessories), samples are core elements in the carpet decision-making process.

We have created an extremely high-calibre sample request service, ensuring prompt service for the consumer. Each sample is professionally presented in branded packaging and can be posted directly to you or to the consumer. Delivery is guaranteed within 5 days of placing the sample request, however in most cases samples should arrive within 2 days.

Samples can be ordered by emailing samples@ulstercarpets.com or via our website.

Our Website (www.ulstercarpets.com)

Ulster's website offers a great wealth of information, and is a one-stop shop for everything you need to know about Ulster. It is an informative tool for both retailers and consumers; its enhanced features enable users to search for a specific style, range or colour of carpet, or to gain some general advice on decorating. The site is designed to clarify each of the aspects consumers tend to take into consideration when shopping for carpet.

Please ensure you are listed on the site as an Ulster stockist by contacting us at marketing@ulstercarpets.com.



Aftercare

We know that customer service doesn't stop with the purchase, and as you know, no matter how often carpets are vacuumed and how many protective mats are in place, spots and stains will occur now and then.

Ulster have put together an aftercare guide to deal with these occurrences, which can be viewed on our website www.ulstercarpets.com. We hope that this will serve as a useful reference tool for you, our retailers, and our consumers.

Additional Information

Retailers

Ulster continually researches and invests in different ways of keeping our retailers up-to-date. Aimed at the growing number of IT-savvy retailers, we would like to draw your attention to the following.

Retailer eNewsletter

Do you receive Ulster's Retailer eNewsletter? If not please sign up by emailing enewsletter@ulstercarpets.com.

The eNewsletter is a great way of promoting the latest happenings at Ulster and falls in line with our eco-friendly policy of reducing the volume of printed material we produce.

Web Service

As always, our Customer Service Team will be happy to assist you in any way.

Alternatively, why not try Ulster's Web Service? This will serve as an effective tool to facilitate your relationship with the consumer, and is available 24 hours a day, 7 days a week. Such an innovative service tool has proven especially useful at weekends, when the Customer Service Team is not on hand to answer queries directly.

The stock enquiry facility enables you to search by either stock range, design, width or by matching batch with information also available on future planned stock dates. You can also place orders online, and track your orders from placement to delivery.

If you are not already a member of Ulster's Web Service simply visit www.ulsterwebservice.com, click 'Register' and follow the simple steps.



Scanning this QR code will take you directly to www.ulstercarpets.com. More information on QR Codes can be found on page 78.





ulster[™]
www.ulstercarpets.com

Ulster Carpets
Castleisland Factory
Craigavon
Northern Ireland
BT62 1EE

Tel: +44 (0) 28 3833 4433
Fax: +44 (0) 28 3833 3142

